



The Parish Magazine

St Nicholas' Church, Burton-in-Wirral

May 2020

www.burtonchurch.org.uk

SPRING 2020 EDITION

IN THIS EDITION OF THE PARISH MAGAZINE

Coronavirus - Pulling Together Whilst Staying Apart

Life Under Lockdown - Some Personal Reflections

BBC Countryfile at Greenwood Farm in Burton

*Growing & Thriving With God
in Our Community*

Ancient Churchyard Burton

*Church Directory -
Who you may need to contact ...*



<i>Vicar</i>	<i>Cathy Helm</i>	<i>07471 890 827</i>
<i>Lay Readers</i>	<i>Ruth Abbott</i>	<i>342 5032</i>
	<i>Basil Keys</i>	<i>936 1403</i>
	<i>John Morris-Best</i>	<i>327 7873</i>
	<i>Ann Rudd (Emeritus)</i>	<i>336 1513</i>
<i>Churchwardens</i>	<i>Nigel Griffiths</i>	<i>336 3621</i>
	<i>Gian Abbott</i>	<i>342 5032</i>
<i>Deputy Wardens</i>	<i>Tony Carter</i>	<i>336 5446</i>
	<i>John Church</i>	<i>336 2228</i>
<i>Verger Duties</i>	<i>Ann Warr - Services</i>	<i>336 2747</i>
	<i>Judy Redmond - Open & Close</i>	<i>336 3643</i>
	<i>Sue Church - Housekeeping</i>	<i>336 2228</i>
<i>PCC Secretary</i>	<i>John Vinson</i>	<i>336 8350</i>
<i>PCC Treasurer</i>	<i>Bryan Blakeman</i>	<i>336 7435</i>
<i>Gift Aid Secretary</i>	<i>John Miles</i>	<i>336 4972</i>
<i>Friends of St Nicholas</i>	<i>Robin Cowan - Chairman</i>	<i>306 4587</i>
	<i>Gill & John Miles - Admin</i>	<i>336 4972</i>
<i>Music & Singers</i>	<i>Alison Carter</i>	<i>336 5446</i>
<i>Mothers' Union</i>	<i>Ann Rudd</i>	<i>336 1513</i>
<i>Junior Church</i>	<i>Amanda Ankers</i>	<i>336 3998</i>
<i>Flower Arranging</i>	<i>Sue Church</i>	<i>336 2228</i>
<i>Lay Synod Chairman</i>	<i>Basil Keys</i>	<i>936 1403</i>
<i>Bell Tower Captain</i>	<i>Jane Davies</i>	<i>353 0074</i>
<i>Parish Magazine</i>	<i>Sue Birch - Administrator</i>	<i>271 4278</i>
	<i>John Vinson</i>	<i>336 8350</i>
<i>Administration</i>	<i>email - burtonchurchcomms@btinternet.com</i>	

The Trees

*The trees are coming into leaf
Like something almost being said;
The recent buds relax and spread,
Their greenness is a kind of grief.*

*Is it that they are born again
And we grow old? No, they die too,
Their yearly trick of looking new
Is written down in rings of grain.*

*Yet still the unresting castles thresh
In full grown thickness every May.
Last year is dead, they seem to say,
Begin afresh, afresh, afresh*

Philip Larkin.

The Vicar Writes . . .



It is so wonderful to see and hear of the many ways in which people right across our community and beyond are responding to the lockdown.

We've heard about people picking up prescriptions and food, having meaningful rather than rushed conversations on the phone, cooking meals, walking the dog, co-ordinating the volunteers, sending funny clips on TikTok or WhatsApp to cheer someone up.

Others have been involved in having story time with grandchildren via Skype, knitting hearts for those in hospital who cannot be visited by their families and then of course all those who turn out on a Thursday evening at 8pm to clap, bang pans or even horns to thank all those key workers and NHS staff who are so amazing.



We know we isolate to protect others as well as ourselves but it feels counter intuitive to not shake someone's hand in greeting or to hug a friend and so we let people know how much they mean to us and how thankful we are, using the best means we can.

We have just celebrated Easter in the best way we could, not in church full of beautiful lilies and flowers and joyful resurrection hymns but in our own homes either watching a service on TV or online, or quietly joining in with our services which are sent out every week. The joy of Easter morning can be celebrated wherever we are.

But perhaps this year, more than ever before we felt closer to how the disciples felt during that first Easter..... confused, frightened for their safety, lonely, bereft of their friend, wondering what the future would look like, questioning would it ever be the same again?

It was never ever going to be the same again for those friends of Jesus, as they discovered.

Though the doors were locked, Jesus came and stood among them and said, "Peace be with you"

John 20: 25

Isn't that just what we need to know too, that even in our isolation, our fear, however busy we try and keep ourselves, however lonely we may feel, that we are not on our own. The doors may be shut, but that's no barrier to the risen Lord Jesus. He will always enter where he is welcomed, where he knows there are those ready to receive him.

Life won't be the same again for us either, there will be the 'do you remember during lockdown ...' stories and, of course, for many thousands who have lost loved ones, life will always be heartbreakingly different. There has been time spent reflecting on how we can actually manage with less and that time spent with loved ones is not to be wasted. As we have this time and space to reflect on our lives and how we have chosen to live them, let's give space each day to the risen Lord Jesus who brings us his peace, his joy and his hope.

I am sending out our Sunday services via email each week and you can either email me c.helm@burtonchurch.org.uk to ask to be included or you can find these and other resources on the website.

Every Sunday evening since the lockdown, Christians across the world have been lighting a candle at 8pm to put in a window and to pray for their families, communities and our nations as we bring the light of Christ into the darkness of our current situation. We may feel that the coldness and darkness has extinguished our light. The light may be low, only a flicker, but it does not go out. Even the tiniest glow can be fanned into flame. So we pray **'Christ as a light, illumine and guide me.'**

cathy

A Prayer for These Times

*Hold on to us, Lord,
through this troubled time.*

*Where there is sickness,
may there also be health.*

*Where there are tears,
may there also be laughter.*

*Where there is despair,
may there also be hope.*

*Where there is fear,
may there also be trust.*

*Where there is hardship,
may there also be help.*

*Where there is doubt,
may there also be faith.*

*Where there is weakness,
may there also be strength.*

*Where there is defeat,
may there also be victory.*

*Where there is chaos,
may there also be calm.*

*Where there are problems,
may there also be solutions.*

*Where there is distancing in body,
may there also be a coming together in
spirit.*

*Where there is death,
may there also be life.*

*Come, Lord, and work your miracle of love,
out of darkness bringing light.*

Amen.



HM The Queen



Many religions have festivals which celebrate light overcoming darkness. Such occasions are often accompanied by the lighting of candles. They seem to speak to every culture, and appeal to people of all faiths, and of none. They are lit on birthday cakes and to mark family anniversaries, when we gather happily around a source of light. It unites us.

As darkness falls on the Saturday before Easter Day, many Christians would normally light candles together. In church, one light would pass to another, spreading slowly and then more rapidly as more candles are lit. It's a way of showing how the good news of Christ's resurrection has been passed on from the first Easter by every generation until now.

This year, Easter will be different for many of us, but by keeping apart we keep others safe. But Easter isn't cancelled; indeed, we need Easter as much as ever. The discovery of the risen Christ on the first Easter Day gave his followers new hope and fresh purpose, and we can all take heart from this. We know that Coronavirus will not overcome us. As dark as death can be — particularly for those suffering with grief — light and life are greater. May the living flame of the Easter hope be a steady guide as we face the future.



NEWS NIGHT

Social Comment



You do not survive the illness through fortitude and strength of character . . .

They tell us Coronavirus is the 'great leveller', it's not, it's much, much harder if you're poor...this is a myth which needs debunking,

Those who have been on the front line right now, bus drivers, shelf stackers, nurses, care home workers, hospital staff and shopkeepers are disproportionately the lower paid members of our workforce. They are more likely to catch the disease because they are more exposed.


Those who live in tower blocks and small flats will find the lockdown tougher. Those in manual jobs will be unable to work from home.

This is a health issue with huge ramifications for social welfare, and it's a welfare issue with huge ramifications for public health.

Emily Maitlis, BBC

Reflections

*St Nicholas' Church
in Spring*



Like all places of worship throughout the UK St Nicholas' Church must remain closed for now. However, the church continues to support and encourage people throughout the local community by making use of telephones, tablets, social media and other forms of technology in order to keep in touch with everyone. This way we are able to ensure that people are supported and pastoral care maintained. And, as shepherds of Christ's flock, St Nicholas' Church is committed to making this happen.

Income of Charities is being hit by Coronavirus



Like many charities, the finances of St Nicholas' Church have been affected by the current lockdown as a result of the Coronavirus pandemic. Charities have been unable to fund raise, charity shops are unable to open and any charitable organisations that rely on cash donations or purchases will have been affected.

St Nicholas' Church receives its income from regular donations made by church members and the Friends of St Nicholas' Church who pay by regular standing order from their bank accounts. However, money that would normally be raised through fund-raising events, weddings etc. and money donated each week on the offertory plate at church services, has dried up.

Estimates vary, but the deficit to the church in the current financial year as a result of Coronavirus is likely to be between £5,000 and £10,000, depending on how long the lockdown lasts.

Church finances are always delicately balanced. The majority of church costs are 'fixed costs' which means that they don't vary depending on when the church is open or on the number of services that take place. As everyone will appreciate, if the church's income is reduced but costs remain largely static, a shortfall can easily arise.

Some church costs may reduce marginally over the next few months. Heating and lighting costs will decrease, but as far as the overall church budget is concerned such costs would be expected to reduce at this time of year in any case. Any small savings achieved will be dwarfed by the loss of significant revenue.

Church members or supporters of the Friends of St Nicholas' Church who normally make cash donations are being encouraged to set up a regular standing order via their bank account.

For more details please contact:

John Miles, Gift Aid Secretary

tel 0151 336 4972 or

johnmiles@therocklands.plus.com



Christian Aid Week 10-16 May

An Appeal for Your Generosity

The wretched Coronavirus has reminded us all that we are part of the whole wide world and we all depend on one other, both here and abroad. It also hardly needs saying that Christian Aid is being faced with huge needs in developing countries arising from this pandemic, which knows no boundaries.

The consequences of the virus are dreadful here at home, and just imagine how much grimmer they will be in countries with so few resources that can be of help.

In early May we would normally have the annual house-to-house collection, and people in the parish are always generous; last year you gave a wonderful total of over £1,300. Obviously the lockdown means that we cannot undertake the collection this year, at the very time when your donations will be sorely needed by those who have so little.

The charity Christian Aid believes we can all achieve so much more when we team up with others, Consequently Christian Aid works alongside partners, donors, governments and organisations to help fight poverty and injustice.

As the official relief, development and advocacy agency of 41 sponsoring churches in Britain and Ireland, Christian Aid works as part of a worldwide church community.



You can donate on line by following the link [here](#).

Scroll down to 'Neston and District Churches Together' under Teams (and if you can Gift Aid your donation that would help even more – the website makes it easy to do so) or you can donate by phone on 0207 523 2269.

Thank You!

Janey Griffiths

giftaid it



Bishop Wilson Church of
England Primary, Burton



During such unprecedented and uncertain times, schools are not 'open' as normal but schools, including ours, do still remain open to children of key workers and to vulnerable children. Although the normal day to day school routine and structure is no longer statutory, such as teaching the national curriculum, in our school we have been exploring learning in a variety of creative ways.

For our children who are learning from home, we have been uploading weekly learning packs for each class to download and engage with. The children can then take photos, videos, write journals or send in pictures to their teachers, via the Class Dojo app, in order to share what they have been up to and to keep in touch with their class teacher. This has proved to be an invaluable resource for allowing teachers to check in on their children and keep in touch with all families, offer help and support where

needed and share fun, challenging activities for everyone to try at home. The response from both children and parents has been incredibly positive and supportive and the efforts of staff have been fantastic. We have been very grateful to our parents who have followed government guidelines and have ensured their children stay at home, stay safe and help to protect the NHS and themselves.

Some of our parents, who are key workers, have relied on school being open in order for them to be able to go to work and help make a positive difference in the fight against the current pandemic. As such, school has been open to these children and learning has taken a creative twist.

Children have enjoyed activities such as baking, gardening, sports challenges, and a variety of arts and crafts. Some lovely muffins were baked in our first week of closure and an amazing rainbow creation is still being worked on!



Bishop Wilson Church of
England Primary, Burton

Alongside these activities, children have still been focusing on some key skills in maths and English, just like children learning at home are.

During such difficult times, mental health and well-being are more important than ever.

In partnership with MyHappyMind, a pilot scheme that we are currently part of that aims to teach children all about their brain, their mind and their own self, we have been able to provide support to parents and children which can help them during this complex time.

Children will have a lot of questions during this confusing time and MyHappyMind can help parents to look after their child's mental health and well-being and staff are always on hand to support families in any way they can.



A Message from Bishop Wilson PTA

We have some exciting news for you all.

We finally hit our target of £5,500 and are thrilled to tell you that while we have been away the playground elves have been busy and built an amazing activity trail for the children to find on their return to school.



It makes the most wonderful addition to the playground and looks amazing. We would like to say thank you to all our Bishop Wilson family for all your donations over recent years. We did it, you did it, and the children of Bishop Wilson will benefit for many years to come. News from the school story time, click below:

<https://www.facebook.com/BishopWilsonPrimary/>

CHILDREN & FAMILIES EASTER ACTIVITIES

Rev Cathy Helm sent out activities for every day of the Easter weekend for the families to do at home, which included the egg rolling on the Saturday. Everyone did it in their own way at home ... and it looked amazing.



HM Government

**AT HOME
SHOULDN'T
MEAN 
AT RISK**

#YOUARENOTALONE

FIND SUPPORT AT:
gov.uk/domestic-abuse

There Really is a ***St Corona***

Saints Victor and Corona are two Christian martyrs. Victor was a Roman soldier who was tortured and killed; Corona was killed for comforting him.

Until recently, St Corona had become nearly forgotten. Very little is actually known about the young woman who was killed for her Christian faith around the time of the second century but this latest Coronavirus pandemic has begun to shed light on who St Corona was.

The St Corona legends are bloody and it is believed that as a 16-year-old, she was forced to watch her husband, St Victor, being murdered because of his faith.

St Corona is not the namesake for the virus. The Latin word 'corona' means 'crown'. As legend has it the name is an indication that the young saint had achieved the 'crown of eternal life' because of the steadfastness of her faith. The connection with the Coronavirus, named because of their crown-like structure, is just a coincidence.

The relics of St Corona can be found in the Roman Catholic cathedral in the spa city of Aachen, Germany near the border with Belgium. It is one of Europe's oldest cathedrals and historically was used for the coronation of German kings and queens.



An Appeal by the Critical Care Unit at Arrowe Park Hospital



All our poorly patients are unable to have visitors at the moment. We are putting out a plea for any knitters or crocheters to please help us make this a tiny bit easier for them and their families at this really difficult time.

We are asking for small knitted or crocheted hearts to be made, preferably a matching pair. One will go to the poorly patient and one will go to the family.

It is important to use clean yarn and seal them in a taped bag, such as a freezer bag or bin liner. Please also date the bags because 72 hours must have elapsed before they are safe to use.

All of the hearts will get laundered before being given to patients and their families. The Critical Care Unit have their health and safety and infection control procedures as highest priority, even more so with our current Situation.

***Please send to:
Critical Care Unit,
Arrowe Park Hospital,
Upton, Wirral, CH49 5PE***



***The patterns for making
the hearts can be found at:***

Click [here](#)

Or at the
Ravelry website:

Click [here](#)



***Thank you from the
bottom of our hearts.***

SEW SCRUBS FOR HOSPITALS IN WIRRAL AND CHESTER

*If you can sew, why not join
the Facebook group that sews
scrubs for local hospitals? This
is part of a national group
called
For the Love of Scrubs*

*For more information
click [here](#)*

*The drop off for scrubs is any
Co-op store.
Alternatively, Deborah who
lives at The Gallery in Burton
Village is the Community Area
Manager for the Co-op and any
sewn scrubs can be dropped at
her house.*

Photography ...

The publishing team at the Parish Magazine is looking for good quality original photographs depicting local scenes and images of life in and around the parish. This is not a competition, but we hope to use pictures submitted in future issues of the magazine.

The categories under which we would like photographers to submit their creative and artistic works are:

- St Nicholas' Churchyard
- Parish Landmarks & Architecture
- Sunrise & Sunset
- Agriculture , Farming & Rural Craft
- Flora, Fauna & Wildlife
- Lanes & Byways
- The Four Seasons



Photographs must be original and submitted digitally. By submitting a piece of work the photographer agrees to grant St Nicholas' Church a royalty-free licence to use the image.



We would like to use as much local photography as we are able in the production of the Parish Magazine.

Primarily we are seeking village and rural landscape photographs. Images should avoid showing the faces of individuals. We will endeavour to acknowledge and credit the photographer of images used. When submitting photographs via email please confirm your name together with a brief description of the subject matter. Thank you.



Please submit your photographs to: burtonchurchcomms@btinternet.com

Life Under Lockdown



The team responsible for producing the Parish Magazine recently asked for your thoughts and reflections on life under lockdown and how it may have affected people in different ways.

We received quite a number of responses and it has been interesting to learn about how some of the enforced change of lifestyle has affected people, how they have adjusted and how they have been using their time.

We also must remember that for many people, both locally and farther afield, the lockdown has undoubtedly been difficult.



'Granny Time' Under Lockdown

Janey Griffiths - Burton Village

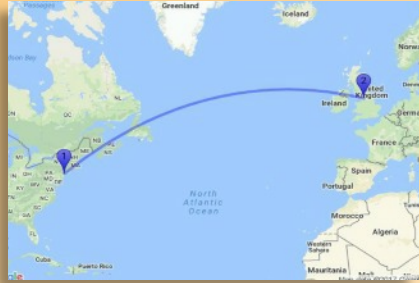
Lockdown is providing me with a great opportunity!

Our grandchildren are spread around this country and in Connecticut, USA. Like everyone else they are confined to home, with their parents trying to work while they entertain them. So 'Granny Time' has become a feature. I book a slot and have video time with them on WhatsApp or Facetime.



We are all watching our seeds propagate and grow; one household has a veritable vegetable garden in the making! I'm not doing so well here but do have the biggest courgette plant so far.

In Connecticut we are watching via a web cam a nest of bald eagles. Three eggs have hatched and the fledglings are being supplied with fish; we are now watching them being taught how to eat. The cunning eagles have their very large nest near a trout farm in Iowa.



***Connecticut is the southernmost state
in the New England region of
northeastern USA***

Using old photos, pictures and objects round the house I am telling them bits of family history which is something we never had time to do before. The photos and funny stories about their parents when young, are the ones that go down best.

Tales about my childhood in Africa, Malta and Ireland and about the ways of the world at that time, are all news to them.

The 'best seller' is hearing about my father taking off his wooden leg and hopping into the Maltese sea to swim!

Reading stories works well too, especially for the younger ones who like seeing the pictures.

It is so good to have time with them when we can't get together - there is so much more time to chat at the moment in the absence of other distractions.

The project is certainly keeping me on my toes working out topics for the next chat!

I've Been 'Taking Stock' Under Lockdown

Steven Cox - Puddington Village

The most interesting thing for me, as a former teacher, has been to rather suddenly having the time to really reflect on life, and what really matters.

I have been forced to consider how most of us living in this parish are fortunate. Compared with many, we will get through, but we may not have the lives we thought we would have: that will take some getting used to.

“ It also seems clear that the basics of human life, such as loving thy neighbour, doing unto others, making time to help others, and appreciating generosity and kindness, have become more necessary than ever before.

I feel I have probably taken too much – including life itself – for granted, been too busy focusing on stuff that really doesn't

matter, and that I haven't always appreciated what is in front of me.

For all the worry, I have had time to think I can be stronger and happier when friends, family and community are a more valued part of life.

In these difficult times I have never needed and appreciated my garden, Puddington Village and the Village Green, the locality's beauty, more. A palpable sense of community has also arisen: we are all checking on each other, seeing who needs what, in a way not seen in my lifetime.



Puddington Village Green

When this is all over, I hope that these feelings – a recognition of the stirring of a greater sense of collective community responsibility, a deeper appreciation for the NHS and other public and private social care services staff, can make people more willing to think again about the sort of people we really are. It feels as if perhaps a dormant bit of our humanity, not just nature, might be coming back to life, this Spring.

Every Cloud Has a Silver Lining Under Lockdown

The Litter Pickers of Puddington Lane

When wandering along Puddington Lane, starting from the Chester High Road through Puddington Village and on towards Burton, which we do most days, my husband and I retrieve items which people have decided they no longer want.

On average we usually find about 15 Carling beer cans – usually three quarters full – so why buy it if they don't like it? Sometimes, more thoughtful people bag everything up – sauce cartons, chip wrappers, cigarette packets etc. before hurling the lot out of the car window.



There is often a pattern to the littering – a vodka bottle is a regular – always in the same place – as is a Chardonnay bottle a little further along. There is a regular area for green beer bottles too.



But sometimes the litter pickers locate rather strange items. Over the years we have found;

- 1) a red lace thong (size 12 at a guess – anyone missing one?)
- 2) pregnancy testing kit
- 3) leopard skin thong (bit bigger than the other one)
- 4) pair of black tights
- 5) bra
- 6) pair of white stockings with pink garters
- 7) £30 cash (returned to owner)

Until four years ago there was a special place to find the covers of pornographic CDs. Each had a warning "This CD contains graphic images not suitable for under 18-year olds" Well, one glance at the photo on the cover would tell you that! However, we've found nothing for absolutely ages. We can only conclude the person involved has either moved ... or been locked up.

But with the Covid-19 lockdown, we now only find about two beer cans and a few odd items on our travels, so even the darkest of clouds do have a touch of silver!

Shopping in Burton Village

Circa 1900
to 1970

John Roe



Many of today's local residents will not remember when there were five shops in Burton village. To help matters, the 1950 family name of each business is shown in brackets. Also, there were travelling weekly vendors visiting and selling their goods.

The oldest shop was the **Post Office** [Howe] dating back to the 19th century. Post Office duties included selling saving stamps, dog licences, wireless licences and stationery as well as fancy goods, and Gifts. In 1935 a new single-story extension was added to the right hand Gable of the Post Office. (Editor's note: Click [here](#) for this very interesting historical tour from Neston to Burton and for more pictures.

Across the road was [Boyle] the newsagent, confectioner, and grocer in the White House. The bakery was above the shop on the first floor, and bread and cakes were made daily. In 1935 a butcher's shop [Swift] was made from a barn at Elm Farm by John Hulse and Amy, one of his daughters. This is now the garage inside the wall in Puddington Lane. Slaughtering took place further up the yard until

the early '50s. A new shop with living accommodation above was built adjacent to the gateway into White House Farm in about 1968.

Around 1928 a high-class grocer and confectioner [Blythyn] built a double fronted shop opposite the end of Vicarage Lane with car parking, telephone, a freezer for ice cream, and they had a Saturday delivery boy.

This 'new' shop was patronised by 'the new rich residents' who had built properties on Dunstan Lane and Mudhouse Lanes, as well as on Neston road. Original villagers never used this shop.

A fishmonger and greengrocery shop (**Jackson**) was built about 1934, and when ceasing to trade the building became 'The Gallery', the fourth building down from the newsagent.

Weekly mobile vendors included Crimes (chandlery and paraffin), Hevysedge (bottled beers and minerals) and the Co-op van delivered bread and grocery parcels from Neston. Twice a year Horrocks draper's van called selling household linen, towels, and a limited range of dress-making materials.

So back in the '50s many of the original villagers never needed to leave the village, and a 'lockdown' would have made no difference whatsoever!

Do you have memories of shopping in Burton? Drop us a line, we'd love to hear about them. Please send all submissions to sue@suebirch.com

Taking a Walk In Burton

Residents of Puddington and Burton are very fortunate as most properties have gardens, and a nice environment for daily exercise. However, if anyone is getting bored with their immediate surroundings how about keeping to socially safe distances and walking in the Burton woods and revisiting some forgotten sights?

Take a walk up the Rake and into the Churchyard. Take the path left of the Church up into the woods and turn left at the fork. You will come to the 'Quakers Graves' on the right.

Continue along the bottom of the woods and pass the back of Bishop Wilson's original Burton School dating from 1724. When you reach Mill Lane, turn right. You will pass the remains of the peg mill on the left (in the gardens of Millwood and now covered in ivy) before entering Burton woods again.

Do you have a favourite Burton or Puddington walk? Let us know and we will feature it in the next Magazine.

Please send any ideas to:
sue@suebirch.com



The Quakers Graves



Inscription on the Graves



*Just take the path to the
left of the church*

CORONAVIRUS - LOCAL HELP & INFORMATION



St Nicholas' Church

Burton-in-Wirral



BURTON CORONAVIRUS COMMUNITY RESPONSE

Are you self isolating? Have you been advised to stay at home due to underlying health conditions? Your community is here to help you. We have put together a team of volunteers to offer **free** support to anyone in the local area who may need it. Things we can do:

- | | |
|--|---|
| <ul style="list-style-type: none">• Shopping for groceries• Walking the dog• A friendly phone call | <ul style="list-style-type: none">• Collecting medication• Post office trips• Anything else (we will try our best to help with anything you need) |
|--|---|

Please phone our community hotline on:

0151 665 0867

and leave us a message with your name, contact number, and a description of what we can do for you. Messages are checked multiple times a day and one of our volunteers will be in touch as soon as they can.

Please note that to stay safe and prevent the virus spreading, our volunteers have been advised to avoid physical contact and to keep a minimum 2m distance where possible. Please wash your hands regularly.

Message from Justin Madders, MP

If you are self-isolating and are unable to get to the shops, and do not qualify for the Council HELP scheme, we can offer supplies delivered to your door.

Phone: 0151 357 2092

Email: EPorthelp@gmail.com



No payment but if you can please make a donation to West Cheshire Foodbank

(<https://twitter.com/justinmadders/status/1244384775726682116?s=09>)

The Puddington Society

CORONAVIRUS INFORMATION



Supporting Our Local Community

With the continuing concern over the Coronavirus outbreak we all face a new, strange and concerning period of time. The Puddington Society committee would like you to know that help is at hand should you need it.

Please keep the following telephone numbers safe so that if you require support of any kind, a chat, require provisions collected, medicines, or feel concerned about your health, please call one of us and we will arrange to help. For grocery shopping all the major supermarkets offer online ordering and AMS Dairy in Neston (336 6508) will deliver milk, fruit juice, butter, eggs and bread etc.

Whatever happens over the coming weeks we will work together as a team to support you promptly and do whatever we can to look after one another's wellbeing.

Steven Cox	336 8772	07745 739 715
Joanne Ardern	336 6275	07791 225 415
Hazel Huxley	336 2288	07745 590 471
John Cadden	336 5967	07708 971 840
Jenny Sneddon	01244 881 493	07530 144 763
Bryan Blakeman	336 7435	07740 203 288

**Keep up to date via TV, Radio &
<https://www.nhs.uk/conditions/coronavirus-covid-19>**

AboutMyArea
The local interactive website

You can also find up to date information and advice about support services, local deliveries etc. at the following website: www.aboutmyarea.co.uk/ch64, or by downloading the Neston Life mobile app, free of charge, from usual app stores.

Ness Botanic Gardens is closed in response to Covid-19



Please keep checking our website <https://www.liverpool.ac.uk/ness-gardens/>, and social media channels for updates.

Have a welcome waiting for hedgehogs as they wake from winter sleep

Zoë Chapman, University of Liverpool Hedgehog Champion



There has been a great deal of hedgehog-related activity over the last few months, and the biggest news is that the University of Liverpool was awarded Bronze accreditation in the national Hedgehog Friendly Campus scheme, one of 23 UK universities to achieve the accolade. The award recognises the hard work involved in raising awareness and improving the local environment for our prickly pals. The project comprises staff, students and volunteers from across the university and the certificate is now on display in the Visitor Centre at Ness. Work will now begin on planning the work necessary to achieve the Silver accreditation in 2020-2021.

As part of the project, Ness hosted a Hedgehog Weekend in January, which included a range of events including a family-focused Helping Hedgehogs workshop, a First Aid for Hedgehogs session, a workshop looking at how to build a simple hedgehog feeder and children's crafts. Wirral Animal Sanctuary joined us across the weekend dispensing hedgehog advice and on Sunday afternoon the Members Lecture was taken by Hugh Warwick, who spoke eloquently (and entertainingly!) to a full-to-bursting Lecture Theatre audience about the plight of the hedgehog and what we can do to help them. Please do keep a look out for more events over the coming months.

As hedgehogs rouse from their hibernation, now is an excellent time to get your garden ready for our prickly pals. Placing food and water out for them, ensuring your garden has 'Hedgehog Highways' and leaving a wild area in your garden are all invaluable to hedgehogs.

To get involved in the project or to find out more, contact the University of Liverpool's Hedgehog Champion, Zoë Chapman by emailing ZChapman@liverpool.ac.uk

We are also on Twitter <https://twitter.com/HogLiv>

Wirral Animal Sanctuary can be found online and across social media platforms:

<https://wirralanimalsanctuary.co.uk/wildlife>

BURTON MERE WETLANDS

We would like to remind everyone that in line with clear instructions from the Government for us all to remain at home (apart from a limited number of allowed activities), the reserve remains closed to visitors until further notice and our events are postponed.

It is with great sadness that we ask people to continue to refrain from visiting us, but we must play our part to help restrict the spread of Coronavirus.

We are continuing as much of our important work as we can under the current restrictions. We are also doing our bit to try and lift the nation's spirits through initiatives like #BreakfastBirdwatch and other daily communications, especially on our social channels.

For the millions of us now in lockdown, nature has never been more important - providing solace and comfort in these challenging times. RSPB will continue to try and help you enjoy the birds you see through your windows or on your daily exercise, and the joys brought by the arrival of spring. We believe the greatest thank you we can offer to the natural environment that sustains us through these challenging times is to continue our work to protect it.

<https://www.rspb.org.uk/>

<https://www.facebook.com/RSPBBurtonMere/>

https://twitter.com/RSPB_BurtonMere

Lots of great activities for kids:
bit.ly/RSPBHomeActivities



Kingfisher



Marsh Harrier



Visitors Centre

*Self Isolating &
Social Distancing*

*Ploughing a lone furrow
in the fields below
Puddington*





BBC
COUNTRYFILE

Pictures used in this article were taken before social distancing was introduced

Alex Crossley

Greenwood Farm, Burton

On Sunday 5 April BBC's popular programme, COUNTRYFILE featured extended coverage of life at Greenwood Farm in Burton, home of the Crossley family who farm sheep on the salt marshes of the Dee Estuary.

Entitled *24 Hours in the Lambing Shed* the programme highlighted the trials and tribulations of managing sheep and caring for the ewes and new-born lambs. The programme was presented by Adam Henson and Helen Skelton and featured Alex Crossley and other members of the Crossley farming family.

The programme is available on the BBC iPlayer. Click [here](#).



COUNTRYFILE
24 Hours
in the
Lambing
Shed



All the cast after filming

The BBC COUNTRYFILE programme showed exactly what lambing time is really like on the Crossley family farm. It also featured the surrounding wetlands of the *RSPB Burton Mere Wetlands Reserve* and the staff explained the benefit the area offers, not only to nature and conservation, but to the well-being of people who live and work on the salt marshes.



Adam Henson



Adam in the lambing shed



Helen Skelton



James Crossley explaining what is happening

'Our family has farmed at Greenwood Farm in Burton for over 50 years and nothing like this has ever happened before. Having the BBC here was a marvellous opportunity for people to see what goes on at lambing time and for everyone to learn a bit more about the area of the county in which we all live. It has also led to a welcome increase in lamb sales!'

Beth Crossley



RSPB's Graham Jones



RSPB's Lucy Hodson

Find out
what's been
going on
down the
Garden Path

As I write it is a beautiful day with bright blue skies and it's very warm.

The lockdown has given me more time to reflect on the beauty of the garden. The silence was only interrupted by the sound of bees and lovely birdsong. Many pretty butterflies have also been spotted.

Of course, many tasks in the garden must be completed. It was a mass of colour – the camellias were so lovely, and the tulips are currently in full bloom. A pot containing Black Pansies and Tulip Shirley look lovely. The twisted hazel (Harry Lauder's Walking Stick) had masses of catkins and is now in full leaf.

Three new dahlias, Star Surprise, remain in pots and will only be planted out when there is no danger of frost. A hybrid tea rose is also in a

large pot. This is Rose Gaujard which has cherry red blooms with silver backs. Two clematis –



Montana Rubens and Pamela Jackman are in full bloom.

Twenty gladioli have been planted i.e. Paloma Blanca (white) and Donatella (peach).

The greenhouse is currently full of seedlings which appear to be growing on well – Cosmos, Larkspur, Cornflower, Sea of Pink and mixed annuals. Some of these seedlings are 'hardening off', but as it is cold at night, they are covered over with newspaper or net curtain.

The garden was full of Celandines. Why let these flowers grow in your garden? So that I can press these lovely blooms without picking them in the wild. Currently the flower presses and various books are full.

Many birds continue to visit the garden. Jenny Wren is very often heard and occasionally seen. Our two boxes do not have any tenants at the moment. Blackbirds are always seen as well as green/goldfinches and a Greater Spotted Woodpecker visits. Two robins are, of course, frequent visitors.

Jobs to be getting on with ...

- Plant out annuals according to the weather
- Continue weeding
- Remember to water not only new plants, but also tubs.

Enjoy the garden!

Flori Bunda

Supporting the Local Community

Dovecote
Nurseries
Station Road
Burton



Continue to
enjoy your
garden and
borders and
let us deliver
what you
need.

Dovecote Nurseries is closed to the public due to the government's Coronavirus regulations. However, we are allowed to take orders by phone and email and we accept payment by card.

We can deliver locally to your door (3 mile radius) free of charge. Minimum order £20.

We deliver to: Burton, Puddington, Shotwick, Ness, Little Neston, Neston & Parkgate



STOCK AVAILABLE FOR HOME DELIVERY

Hardy Bedding Plants

- Pansies ***Sold Out!***
- Violas ***Sold Out!***
- Stocks
- Gazanias
- Antirrhinums
- Mimulus

£2.99 per tray

All ready for planting

Sweet Peas

- Single Colour or Mixed Colours
- £2 per pot

For Baskets & Containers

- 9 cm pots at £1.50 per pot

Coming Soon

- Half hardy plants
 - Geraniums
 - Pelargoniums
 - Osteospermums
 - Argyranthemums
- £2.99 per pot or 4 pots for £10
- Ivy-leaf geraniums
- £1.80 per pot

Other Items

- Evergreens & Deciduous Shrubs
- Climbers
- Herbaceous Plants

Vegetable Plants

- Leeks
- Broccoli
- Swiss Chard
- Peas
- Broad Beans

All ready for planting

Vegetables for Later Planting

- Dwarf & Climbing French Beans
 - Runner Beans
 - Sweetcorn
 - Cabbage
- £2.50 per pack

Tomatoes, Courgettes, & Cucumbers

£1.20 per plant

Compost

- Multi-Purpose
- Ericaceous
- Grow Bags
- Farmyard Manure
- John Innes No.2 & No.3
- Bark Chips

Seeds

- Johnsons Flower & Veg Seeds

Terracotta Pots - Ceramic Pots - Wooden Barrels

Tales of the Wirral Foodbank

No, not the adventures of Hammy and her friends as they investigate a well-known peninsula, but a quick trip through the changes that the trustees, staff and volunteers at the Wirral Foodbank have made recently in order to continue to provide food to those in desperate need. The good news is, despite everything, that's still happening. You can still help even though it's hard to donate food now that the church building is closed. Many donors are giving money instead now and the Foodbank can use this to buy what's needed. You can donate at

<https://wirral.foodbank.org.uk/give-help/donate-Money/> Please note that postal deliveries to businesses are disrupted much more than those to homes, so online donations are preferred over cheques.

Back to early March and we're almost business as usual in the 13 distribution centres. There's hand sanitiser that volunteers and clients are using between interviews and clients who are coughing or sneezing are being asked to wait outside away from everyone else while we bring food to them. Donations from churches and supermarkets are at normal levels and the warehouse is also working through sorting and putting away the surge of donations that starts in Advent and continues to the new year.

By mid-March the government's recommendations for those over 69 and those who are vulnerable have hit the volunteer roster hard.



Pictures used in this article were taken before social distancing was introduced



Food for Distribution



Foodbank Warehouse



The Team of Volunteers

It comes as something of a surprise that all those enthusiastic and active people are actually over 70 (even though it's the new 50 ...).

The Foodbank's trustees are actively discouraging those at risk from coming in. There's a new scheme for distributing food – just one distribution centre in central Birkenhead that's open every day versus the 13 centres that were open one or two times a week. Food parcels are being put together at the warehouse rather than at each distribution centre so that it's quick and easy to provide food to clients. Food in the distribution centres' pantries is being collected and repatriated to the central warehouse.

The next week the nation has been told to stay at home. Foodbanks are classified as essential work (like supermarkets). The remaining volunteers are asked again if they are prepared to work, and the rosters cut back so that we can stay more than 2 metres apart while we work. The teams in the vans who collect supermarket donations and bring food back from the distribution centres are now restricted to people from the same household. Food parcels are still flowing out.

Food donations from churches have all but stopped, but money is coming instead. Donations from supermarkets are down, perhaps because shelves of the staples are now looking pretty empty.

In early April the main Foodbanks and Wirral Council start to pool their efforts to feed the hungry by setting up a single Emergency Food Hub.

At the warehouse we've stopped packing food parcels to be handed out directly and have started packing food boxes that will go to the hub and be supplemented with donations from food



Managing the Process



Handling Logistics



Essential Partnerships

manufacturers and supermarkets. Donations from supermarkets have picked up now that shelves are getting re-stocked. Still no toilet paper, although one person donated two 24 roll packs at the warehouse after guiltily looking at them stacked at home for a couple of weeks.

By mid-April the Emergency Food Hub is humming. With so many people not at work the demand is much bigger than it ever was. The Foodbank is shipping its non-perishable stock in bulk to the hub where it's being merged with fresh food from supermarkets and bulk food from manufacturers. Deliveries of food parcels are being made to those who are unable to get out, and supermarket vouchers provided to those who could get out and shop if they had the money.

At the Foodbank the rate of food going out is much higher than that of it coming in. The Advent and Christmas surge is coming into its own so we still have a healthy supply.

The trustees are looking ahead to what comes next. It seems likely that we'll start to go shopping to supplement the stock using the financial donations we get. This was always a feature of the Foodbank – even in the good old days there were never enough toilet rolls or bags of sugar donated, so we shopped for these. Now we'll add whatever is needed to the shopping list. It will be quite a while before those now not able to work will receive the income support that's promised so the elevated demand on Foodbanks, and your support for them, will continue to be needed.

To Donate Money to Wirral Foodbank

<https://wirral.foodbank.org.uk/give-help/donate-money/>



Picking & Packing



Founders of the Scheme

What's heartening is to see it all come together quickly – donors, volunteers, multiple agencies, supermarkets, councils – to feed the hungry.

Burton & Puddington's GLADSTONE VILLAGE HALL



HOME COOKED MEALS

With support from Gladstone Village Hall, retired caterer Mary Walton is cooking delicious meals delivered to your door. This is an offer aimed at older members of our community. The price, to cover the cost of her quality ingredients, will be £5 per meal.

Call the Burton Community Help hotline on 0151 665 0867, leave a message and we'll get back to you. We need orders in by Sunday each week. Meals will be delivered on a Wednesday.



GLADSTONE RADIO

Don't forget! Gladstone Radio with brilliant Burton DJ Steve Lord. He's live every Thursday at 8pm following the NHS clap, via Facebook. He's taking requests, giving shout-outs and talking community news. It's all about bringing the community together and lifting spirits. If you're not a Facebook member you can still listen.

<https://www.facebook.com/gladstonevillagehall/>



LEARN SPANISH DURING LOCKDOWN

Sarah, who usually teaches Italian at The Hall, is starting a new online 'lingochat'. Adult beginners Spanish. Mondays 8.00 to 8.45pm at £5 per household.

Chester@lingotot.com



RECIPES

Local resident Louise Lord, from Can Do Cupcakes, has started posting a weekly recipe on our Facebook page, perfect for keeping families entertained and fed! Join in and send us a picture of your creations.

<https://www.facebook.com/gladstonevillagehall/>



CHAIR YOGA

To keep his class limber, Andrew Collin has posted a chair yoga session on YouTube, search 'Chair Yoga with Andrew 1'. Of course, any moves followed are at your own risk. If you enjoy the session, why not consider signing up once the class is up and running again.

Classes are Monday & Thursday at 9.30am.

Contact Andrew on 07802 737258





Burton Capenhurst Ledsham Ness
Puddington Shotwick Two Mills Woodbank

Ultrafast Community Broadband Project

Built, funded and enabled by our community for our community

As you may (or may not be aware) B4RN Cheshire is live and running at amazing speeds in Capenhurst, Woodbank and Shotwick – we need it HERE and we want it NOW!!

In order to speed up the process of installing and going live we need to prove there is an overwhelming desire for B4RN in the area, so.....

Rural Gigabit Connectivity

Only 7% of homes and businesses across the UK can access 1GB (1000 meg), the Government is wanting this to increase, especially focusing on rural areas. The voucher scheme will provide up to £3,500 for small businesses and £1,500 for residents to the suppliers of Gigabit internet, i.e. B4RN.

If you register and complete the voucher process the Government grant scheme will allocate funding towards B4RN in our area, this in effect reduces the overall amount of local investment needed and allow the project to run in profit at a very early stage.

What you need to do:

1. www.b4rn.org.uk
2. Get B4RN (top row of icons if on a laptop, within MENU if on a phone)
3. Enter your postcode and check availability – if it's great news then....
4. Scroll down to 'Gigabit Voucher Request Form'
5. Complete the form information * if you're a business or self employed please fill out the company information as that receives the most funding*
6. Submit

Please note there is no contractual agreement for you to take up the service at this stage, when or if B4RN pass your property will be your opportunity to have a house kit fitted and fibre to your house.

If you have any questions regarding the above contact Alison 07817415493, if you would like to speak to a B4RN customer in our area we can arrange that too.

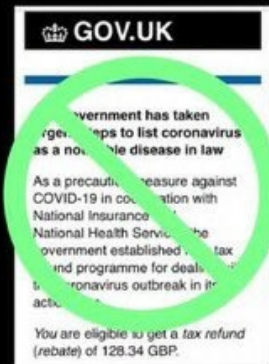
Information
from Police
Community
Support Officer
Linda Conway



HM Government

Coronavirus

Be aware of refund scams.
If you receive a text or email
from HMRC offering you a
tax refund, it's a scam.



**The police will never ask you to
hand over money for safe-keeping**

THE POLICE WILL NEVER
SEND SOMEONE TO YOUR HOME TO
COLLECT MONEY, OR ASK YOU TO
TRANSFER FUNDS OUT OF YOUR ACCOUNT.

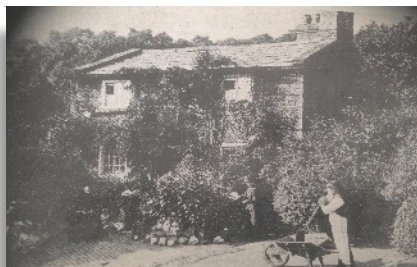


CITY OF LONDON
POLICE



ActionFraud
National Fraud & Cyber Crime Reporting Centre
actionfraud.police.uk

Burton & Neston History Society



The Old Post Office, Burton

The Society started as the Burton and District Local History Society on 21 April 1975 at Burton Manor College. It grew out of a local history course there led by Paul Booth from Liverpool University. Paul Booth became President in 1999.

Its prime purpose is to study and research local history, and it published *Burton in Wirral* in 1984 and in 1996, *Neston 1840-1940*. Both books are now out of print, but are in Neston Library.

In 1999 it followed these up with *Neston at War 1939-45* and in 2014 with *Neston Stone Age to Steam Age*.

These books, as well as being well researched and to a high scholastic standard, are also good to read.

The May meeting of the Society has been cancelled, but here are some resources to keep you going!

Two recently published articles by Anthony Annakin-Smith:

Learning the Ropes: Parkgate, Rope-making and The Ropewalk

<https://www.nestonpast.com/learning-the-ropes-parkgate-rope-making-and-the-ropewalk/>

The Anglican Smelting, Reduction and Coal Company

<https://www.nestonpast.com/anglican-smelting-reduction-and-coal-company-ltd/>

Other Articles

There is also a website to complement Anthony's book *The Neston Collieries, 1759 - 1855* which includes a database of the miners who worked in the early collieries and their families. <https://www.nestoncollieries.org/>

You can also access the History Society's April newsletter which has many links to interesting history related articles and other web content, some of it local.

For the direct link to the pdf file Click [here](#).

Newsletters from the past three years are also available to read. Click [here](#):

There is also a page on the Society's website with all previous bulletins published between 1978 and 2009. Click [here](#).

Happy reading!

From the Parish Registers



Interment

18 March

- William David Steepe



FLORIST OPENS IN BURTON MANOR

Flourish Flowers is now open at Squirrel Lodge in Burton Manor.

Flourish Flowers was established by Angela Adlard in 2011 and is a preferred Florist for 'Oh Me Oh My', Thornton Manor, Tower Hill Barns and are also the resident florist at The Red Fox in Thornton Hough.

They concentrate mainly on creating bespoke flowers for weddings and events, but Flourish bouquets are available online for next day delivery. Drop into the shop to see their range of flowers for sale or sign up for one of their flower-arranging workshops (dates to be confirmed).

Flourishflowers.uk or email
shop@flourishflowers.uk



Hardy Perennials

Next Lunch Dates

Not Out to Lunch unfortunately!

Meetings Suspended

Stay Safe!

POLLARDS INN, WILLASTON

12.30PM FOR 1.00PM

Tel: Vivienne 336 7435

Tel: Linda 336 5017

Holy Communion

Soup & Sandwich Lunch

For the last 9 years we have been holding an informal Holy Communion service once a month for those who find getting up the steps to church a bit of a challenge.

Initially we started in the Burton café and then moved to the Glass House at Burton Manor for a while until we settled in the Sports and Social Club where the facilities make it a perfect venue.

Several of the volunteers who have helped making the soup and sandwiches and hosting the lunch over the years have now stepped down....so a big **Thank You** to all those who have helped so faithfully and also to the new volunteers who have made up the teams so that we can continue to provide this very special service.

Many thanks from
Cathy and those who enjoy coming along
each month.

Gladstone Village Hall, Sports Pavilion, & Grounds

**ACTIVITIES SUSPENDED DUE
TO GOVERNMENT
CORONAVIRUS REGULATIONS**

The perfect setting for uniquely personal wedding celebrations, parties, family BBQs, meetings, corporate events, clubs and groups, and other social shenanigans.

With a professional kitchen, 2 well stocked bars, sound and lighting systems, large projector screen and stage and room for 120, we're ready for any event.

Contact Nicky on 0151 665 0875 or info@gladstonevillagehall.org

Burton and Puddington Sports and Social Club

Welcomes New Members

With active social calendars and great facilities, why not join?

For Social Club membership or Cricket, Tennis, Bowls, Snooker
or the Walking Club call us on 0151 665 0875

To sign up to our Newsletter it's www.gladstonevillagehall.org

To join our bar team call us on 0151 665 0875

To follow us and keep in touch



Registered Osteopath

Balance Health and Wellness

Back and Neck Pain
Hips and Knees
Headaches and Migraines
Sciatica
Sports Injuries



Robert Day BSc(hons) Ost DO

Homewood

Dunstan Lane, Burton CH64 8TG
[www.Registered - Osteopath.com](http://www.Registered-Osteopath.com)

07879 22 55 62

J.F. O'REGAN

CHARACTER ROOFING SPECIALIST

t. 07784 007 767

w. www.jforeganroofing.co.uk

e. jerrysgarnfishing@hotmail.com

Roof installation, refurbishment and repair - character and period building roofing specialist.

- | | | |
|---------------------|----------------------|----------------|
| ■ Listed Buildings | ■ Schools | ■ Tonne |
| ■ Period Properties | ■ Churches | ■ Welsh Slates |
| ■ National Trust | ■ Decorative Slating | ■ Lead Work |
| ■ English Heritage | ■ Westmorland Green | ■ Roof Tiles |

Whatever your specific requirements, for any form of slating and tiling, or for more specialised character roofing and lead work you can be assured that J.F. O'Regan can be relied upon.

Call Jerry on **07784 007767** for expert advice today!



WELSH | TONNE | RANDOM | SLATE SPECIALISTS

COMPLEMENTARY HEALTH THERAPIST

HEALTH ~ BALANCE ~ WELLNESS



Treatments offered include:

- Lymphatic Drainage
- Remedial Massage
- Cranial Therapy
- Indian Head Massage
- Talking/Listening Therapy
- Natural Face Lift
- Aromatherapy
- Reflexology
- Hopi Ear Candling

Help & Advice on Lifestyle, Nutrition & Wellbeing

IN TRAINED & CARING HANDS
WITH OVER 30 YEARS EXPERIENCE

DUNSTAN LANE, BURTON
OSTEOPATHY & NATURAL HEALTH CLINIC, WEST KIRBY
EMAIL:HELENREID13@HOTMAIL.CO.UK

07712 590 269

ACTIVITIES SUSPENDED DUE TO
GOVERNMENT CORONAVIRUS
REGULATIONS

Gift Cafe Puddington

Open 7 Days a Week
Breakfasts - Toasted Ciabattas & Toasties - Hot Drinks -
Homemade Soup
Sandwiches - Cakes - Ice Cream
Chapel House Lodge, Chapel House Lane, Puddington
www.giftcafe.co.uk



Our professional staff have a wealth of experience arranging funerals for bereaved families, serving Wirral and Merseyside.

At Charles Stephens our aim is to ensure that you have the minimum of worry and inconvenience at a time of bereavement. We are keen to offer advice and support wherever necessary to help with your funeral arrangements.

Our six funeral homes, situated across Wirral, are specifically designed to cater for all your needs with comfort, dignity and respect. Each and every member of our team is trained to the highest level and we support the attainment of relevant professional qualifications at all levels.

*An Independent Family Business
Established 1896
Fully Qualified Staff
24 Hours, 7 Days a Week
Pre-paid Funeral Plans*

Clifton House, 215, Bebington Road,
Birkenhead, Merseyside, CH42 4QA
Tel: 0151 645 4396

✉ reception@charles-stephens.com

MARESFIELD FARM, BURTON-IN-WIRRAL

We Only Sell Seasoned Logs

Excellent Quality for Fires, Stoves, Outside Fire Baskets & Chimineas

**Locally Sourced - Barn Dried - Sustainable Material
Hardwood & Softwood Logs Available**

Big Bulk Bag - Delivered & Stacked from £65

Small nets of logs £5 - minimum 6 nets

Tree Surgery & Hedges

**Felling, Reducing, Pruning, Hedge Cutting, Chipping,
Grass Strimming, Ground Clearing, Mini-Digger
Professionally Qualified & Fully Insured**

Joel Blakeman

Tel: 07880 553 775 Tel: 0151 336 7435

✉ maresfieldfarm@btinternet.com

Pleased to Support St Nicholas' Church

The Celtic Arms

NORTHOP COUNTRY PARK

BOOK NOW
01352 840423



MID WEEK TREAT

2 courses £13.95
3 courses £16.95
Available Monday to
Friday 12 - 9.00pm
Saturdays 12 - 4.00pm
Available from the 2nd of January



SUNDAY LUNCH

SET MENU
2 courses £16.95
3 courses £20.95
We also have a
great children's menu



www.thecelticarms.co.uk | The Celtic Arms, Northop Country Park, Northop, CH7 6WA

WIRRAL FUELS



DOMESTIC, COMMERCIAL & FARM FUELS

01244 851200

www.wirralfuels.co.uk

orders@wirralfuels.co.uk

HEATING OIL - BEST SERVICE - COMPETITIVE PRICES

YOGA CLASSES

Classes are held on Tuesdays at Gladstone Village Hall, Burton 7.00pm to 8.30pm. - Hatha Yoga

Also on Mondays & Thursdays at the Burton Sports and Social Club - Chair Yoga 9.30 am to 10:30am

Beginners and returners are all welcome and equipment can be provided



Contact Andrew Collin

Tel: 07802 73 258

✉ andrewcollin@btinternet.com

YOGA

FOR YOUR OWN WELL-BEING'
with Lorraine Coxon
British Wheel of Yoga Qualified

Wednesdays 9.15am to 10.15am
Gladstone Village Hall £7

Yoga to brighten up your morning,
calm the mind, release anxiety
& stress, relieve tired & stiff
muscles, strengthen the body &
increase flexibility

All abilities welcome!

Tel: 07513 156 168
lorraineyoga@outlook.com
@YogawithlorraineC

Yoga means 'addition'...
of energy, strength & beauty to
body, mind & soul

WIRRAL & CHESTER CHIMNEY CLEANING

Call Mr Walker

Bird Guards

Chimney Cows Fitted

Same Day Cleaning Service Available

Cleanliness Guaranteed

Brush & Vacuum



Stonebank Drive
Little Neston
CH64 4DPA

Tel: 0151 336 7274

CORONAVIRUS EPIDEMIC

DURING THESE DIFFICULT

TIMES PLEASE CONTINUE TO

SUPPORT LOCAL

BUSINESSES AND ADVERTISERS

WHEREVER POSSIBLE ...

THANK YOU!

Community & Society Information

**DURING THE PRESENT NATIONAL EMERGENCY SOCIETIES
ARE NOT PERMITTED TO MEET**

THE BURTON SOCIETY

Meetings in the Gladstone Village Hall at 8.00pm
Contact Janey Griffiths 0151 336 3621

THE PUDDINGTON SOCIETY

For more information about events
Contact Hazel Huxley on 0151 336 2288

BURTON RESIDENTS' ASSOCIATION

Membership is open to all residents of Burton
An annual charge of £5 per household is payable from April
burtonresidentsassociation.co.uk

BURTON AND NESTON HISTORY SOCIETY

For more information about events
Contact Robert Thrift on 0151 336 1771

BURTON WALKING GROUP

New members always welcome - for more information about activities
Contact John Nuttall on 0151 336 7178

BURTON BRIDGE CLUB

For further information about future meetings
Contact Hazel Huxley 0151 336 2288.

FRIENDS OF BURTON MANOR GARDENS

For membership information and events:
Contact 0151 336 6154 or email, burtonmanorgardens@gmail.com

LOCAL POLICE COMMUNITY SUPPORT OFFICER (PCSO) LINDA CONWAY

You can contact Linda by emailing linda.conway@cheshire.pnn.police.uk or by calling her
Police Mobile Number 07824 609048.

You can also reach Linda at: www.cheshire.police.uk/little-leston-and-burton

Facebook: Little Neston and Burton Police

Twitter: LilNestonBurPol In an emergency, dial 999.

For general enquires and non-urgent assistance, dial 101.

***Next issue deadline for copy and advertisers 8 May
Magazine Administrator - sue@suebirch.com***

*The Parish Magazine is published by the PCC of
St Nicholas' Church, Burton-in-Wirral.*

*Publication is made possible through the contributions and
donations of church members, Friends of St Nicholas' Church,
residents, advertisers and other members of the public.*

*The PCC is not responsible for the content or claims of
advertisers nor does it warrant or endorse any such content.
Consequently no warranties or endorsements should be inferred.*

*The PCC and editorial team retain the right to edit items
submitted for publication. The editorial team's decision is final.*

*Copies of this magazine can be found at
www.burtonchurch.org.uk*

*This magazine is published bi-monthly, six times a year.
It is normally distributed to nearly every home in the villages of Burton and Puddington as well as
people attending church and visitors from around the area.
In addition it is available on the church website and
emailed to around 200 addresses*

To discuss opportunities to advertise here contact



0151 271 4278 OR



07507 051 048



burtonchurchcomms@btinternet.com

*All proceeds in aid of St Nicholas' Church, Burton-in-Wirral
Registered Charity No. 118483*

