



**BURTON : PUDDINGTON : SHOTWICK**

# **PARISH MAGAZINE & COMMUNITY NEWS**

**MARCH APRIL 2024**



## **IN THIS SPRING EDITION**

**EASTER SERVICES IN BURTON & SHOTWICK**

**MAUNDY THURSDAY SEDER MEAL**

**WINE TASTING EVENING**

*THE PARISH MAGAZINE OF  
ST NICHOLAS' CHURCH, BURTON & ST MICHAEL'S CHURCH, SHOTWICK*

# ST NICHOLAS' CHURCH, BURTON & ST MICHAEL'S CHURCH, SHOTWICK



Vicar: Revd John Coyne  
5 Burton Manor Gardens,  
The Village, Burton, CH64 5AB  
Tel: 07471 890 827  
email: [johncoyne.bps@gmail.com](mailto:johncoyne.bps@gmail.com)

## SERVICES AT ST NICHOLAS' CHURCH, BURTON

[www.burtonchurch.org.uk](http://www.burtonchurch.org.uk)

WEEKLY - SUNDAYS

10:00AM MORNING WORSHIP

WEEKLY - WEDNESDAYS

10:15AM HOLY COMMUNION

1<sup>ST</sup> SUNDAY OF MONTH

8:45AM HOLY COMMUNION

3<sup>RD</sup> SUNDAY OF MONTH

6:30PM EVENSONG



## SERVICES AT ST MICHAEL'S CHURCH, SHOTWICK

[www.shotwick.org.uk](http://www.shotwick.org.uk)

1<sup>ST</sup> SUNDAY OF MONTH

11:30AM MORNING PRAISE

2<sup>ND</sup> SUNDAY OF MONTH

11:30AM HOLY COMMUNION CW

3<sup>RD</sup> SUNDAY OF MONTH

11:30AM MORNING PRAYER BCP

4<sup>TH</sup> SUNDAY OF MONTH

11:30 HOLY COMMUNION BCP

5<sup>TH</sup> SUNDAY OF MONTH

11.30AM HOLY COMMUNION BCP



# *Invitation* **Seder Meal**

*Join us on the evening of  
Maundy Thursday 28 March at  
7:00pm to share food and wine and  
to learn about the relevance of this  
historic ritual.*



The Seder meal is a ritual feast marking the beginning of the Jewish holiday of Passover. Today it is observed by Christian churches to commemorate the Last Supper of Jesus Christ.

This year, St Nicholas' Church is holding a very special Seder Meal (Passover) evening. The meal recalls God's deliverance of the Hebrews from Egyptian slavery which is essential to the founding and identity of the Jewish people. Remembrance is essential to knowing where we all come from. Christians draw upon the theme of deliverance to recall Jesus' offering of himself to restore us to a relationship with God.

We will explore the Jewish roots of Christianity as we go through a Christian version of the Seder meal which in turn links to the Holy Communion that Jesus initiated a short while before his Crucifixion.

The meal will begin at 7.15pm on Maundy Thursday in Burton Church which will be set out with long tables.



*The meal will include meat and vegetarian options. There will be no charge for the meal but donations on the night would be appreciated.*

*As places will be limited please contact John Coyne if you would like to attend. [johncoyne.bps@gmail.com](mailto:johncoyne.bps@gmail.com)*





# SCRIBO



## MAKE THAT CALL THIS EASTER

REVD JOHN COYNE

I was in my first year of service as a military Chaplain and the office phone rang. An unknown voice at the other end said: Padre, I am thinking about becoming a Christian what should I do?

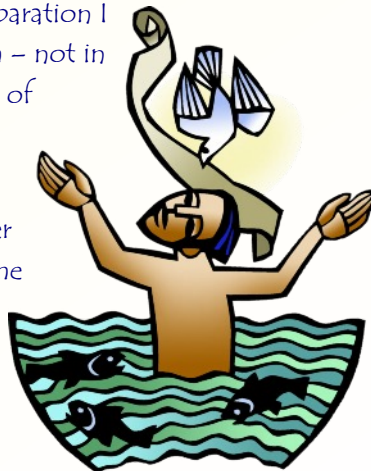
My reply was 'come and see me as soon as you can.' Within an hour a young Officer was in my office explaining that she came from a strong Christian background but since her teens teenage rebellion had turned into more than a decade of outright rejection of God, faith and church.



So why are you here now? I asked. She replied, 'My rebellion no longer makes sense to me. I know about the Christian Faith. I know that I can have a relationship with God through faith in Jesus Christ and I now need to do something about it.'

I wish that were a frequent experience in my ministry but it was clear that this intelligent person was genuinely ready and willing to put their trust in Jesus Christ. I prayed with her and after a period of preparation I was able to baptise her in the local Baptist Church – not in a font but in a deep baptismal pool with a couple of congregations gathered for the event and lots of friends from the RAF looking on.

That baptism service was a first for me. I had never baptised someone by full immersion. Lowering the person backwards into the pool symbolises them dying to an old way of life and lifting them out of the water signifies being raised by Jesus Christ to a whole new life with God.





It echoes the burial of Jesus on Good Friday and him being raised from the dead on Easter Day. In one sense – the amount of water used in baptism is unimportant but that dramatic form of baptism is the best way of describing the significance of Easter. Christians have a resurrection faith which arises out of the death of Jesus.

Over the years I have baptised dozens of young people and adults of all ages by full immersion in a pool or a river. Behind the symbolism are the stories of many people who have become followers of Jesus Christ – not a dead founder – but a Living Lord who transforms lives.

I am fully aware that Christmas draws the bigger crowds to worship services but in essence, Easter is as big a day as Christmas. It is Resurrection Day which calls everyone to a new life in Jesus Christ. It shatters death's hold and is the gateway to a new life in Christ beginning now and which continues into eternity.

That young officer had mocked such thoughts and yet slowly came to the realisation that her determination to make her own mind up had been a long and frustrating way to finding a living faith in Christ as an adult.

The rest of her story is fascinating and took her on a faith journey beyond her career in the RAF, using her linguistic skills and serving God in Sudan.

If you want to know more, come and worship with us at Easter or if that's a step too far – give me a call sometime. I don't bite. Our conversation could lead to a true resurrection experience . . . however long it takes.

God bless you meanwhile.

*John*

07929 627 346

<'))><



# Church Services

## St Nicholas' Church March

### Sundays

- 3 8:45 Holy Communion  
(Traditional Service)  
10.00 All Age Worship
- 10 10:00 Morning Worship
- 17 10:00 Communion for All  
6:30 pm Evensong
- 24 Palm Sunday  
10:00 Morning Worship

### Maundy Thursday

- 28 7:30pm Seder Meal

### Good Friday

- 29 4.00 pm Service

### Easter Sunday

- 31 10:00 Communion for All
- ### Wednesdays
- 10:15 Holy Communion

## April

### Sundays

- 7 8:45 Holy Communion  
(Traditional Service)  
10.00 All Age Worship
  - 14 10:00 Morning Worship
  - 21 10:00 Communion for All  
6:30pm Evensong
  - 28 10:00 Morning Worship
- ### Wednesdays
- 10:15 Holy Communion
- 3 No Service

## St Michael's Church March

### Sundays

- 3 11:30 Morning Praise
  - 10 11:30 Holy Communion CW
  - 17 11:30 Morning Prayer
  - 24 Palm Sunday  
11:30 Holy Communion BCP
- ### Good Friday
- 29 2:00 pm Service
- ### Easter Sunday
- 31 11:30 Holy Communion BCP

## April

### Sundays

- 7 11:30 Morning Praise
- 14 11:30 Holy Communion CW
- 21 11:30 Morning Prayer
- 28 11:30 Holy Communion BCP



# FROM THE PARISH REGISTERS

## *Burton*

### *Funerals*

*5 February*

*Jennifer May Dodman*

*13 February*

*Jocelyn Aimée Barnes*

*28 February*

*Edwina Wingfield Zacharias*

### *Interment of Ashes*

*3 December*

*Anne Anderson*

## *Shotwick*

### *Wedding*

*22 December*

*Katie May Berry &*


*James David Tolley*

### *Funeral*

*19 January*

*Philip Edward Brookes*





# CHURCH LIFE & TIMES AT ST NICHOLAS' BURTON

More details of church activities and  
contacts can be found at:  
[www.burtonchurch.org.uk](http://www.burtonchurch.org.uk)

## **What is Palm Sunday**

Palm Sunday is the Christian feast that falls on the Sunday before Easter.

It commemorates

Christ's triumphal entry into

Jerusalem, an event mentioned in each of the four Gospels.



The name 'Palm Sunday' originates from the palm branches waved by the crowd that gathered to greet and honour Jesus as he entered the city of Jerusalem. Palm Sunday marks the first day of Holy Week in Western Christianity and is the beginning of the last week of the solemn season of Lent,

In most Christian services, Palm Sunday is celebrated by the blessing and distribution of palm branches representing the palm branches that the crowd scattered before Christ as he rode into Jerusalem on a donkey. These palms are sometimes woven into crosses. In some countries the difficulty of procuring palms in unfavourable climates led to the substitution of branches of native trees, including box, olive, willow, and yew.

---

## **Come and join in our own Palm Sunday Procession in Burton**

***On Palm Sunday, 24 March, there will be a donkey procession before the start of the morning service.***

***The procession will start from Burton Manor Café at approximately 9:30am, making its way up to Church.***

***Palms will be available for anyone who wishes to wave them and follow the donkey through the village up to Church.***

***If you prefer to meet the procession on arrival refreshments will be available in church from 9:30am***

---



**THE DONKEY  
SANCTUARY**



## *As busy as ever ...*

Recently Robins' class had a wonderful time at the cabin crew experience at Cheshire College South and West and Chocks Away Diner.

Owls class will become Roman soldiers in Chester after the half-term break. We also have a number of sports competitions coming up.

Reverend John and the Open the Book team continue to come in to school to lead some of our worship for us and the children are always really pleased to see them walking up the path to school.

We are working with some members of Burton community to improve speed awareness through the village and we are planning visits to Burton gardens later in the year.

We have been running a performing arts club, a dance club and chill out club for our children this half-term, which have been very well attended. Next term there will be opportunities to attend fencing club, gym club and gardening club.

We extend a warm welcome to all who wish to join us for our services in Church including our Mother's Day service on 8 March.

A diary entry by Gwen based on the story of 'The Lion Inside' by Rachel Bright and Jim Field.

If you have children of school age and would like to visit our school, please call the school office to arrange a tour, we would love to welcome you!

Don't forget to follow us on Facebook to keep up to date with what we are doing! **Click Here**

Suzanne Roberts

**Head of School**



*Dear Diary,*

*I am tired of being sat on and trodden on but today that will all change because I am meeting the proud lion so that he can help me find my roar.*

*If he doesn't help, I will have to run. If I don't I will be eaten. I feel worried, scared and nervous.*

*From your hopeful friend,*

*Mouse.*





# WHAT IS MESSY CHURCH?

MESSY CHURCH IS A WAY OF BEING A CHURCH FOR FAMILIES AND OTHERS. IT IS CHRIST-CENTRED, AND IT'S FOR ALL AGES, BASED ON CREATIVITY, HOSPITALITY AND CELEBRATION.

***CLICK HERE***

Messy Church started 2024 with a technicolour explosion - as visitors to Church may have already seen!

We have started our programme with the story of Joseph - and his amazing coat - taken from Genesis 36 -37. Together we made a display for Church of Joseph in his amazing coat!

We learnt about his coat of many colours, his strange dreams, the jealousy of his brothers, being sold as a slave and working for Potiphar - and then ending up in jail. Poor Joseph!!

***Thank you to all who came to help.!***



At the next meeting of Messy Church we will continue the story of Joseph - how he meets a King and explains his dreams and we hope the story will have a happy ending!!



***Saturday 27 April  
2 :00 – 3:30pm  
GLADSTONE VILLAGE  
HALL  
CRAFTS, GAMES &  
LOTS OF FUN !***

Mothers' Union is a global Christian movement working with people of all faiths and none to develop communities, strengthen families and advocate for change.

We are a loving organisation open to anyone, and supportive of everyone. You don't have to have children, be married, be a woman, or be a churchgoer to join us. There are different ways to belong depending on what works best for you.

Find out more: **[Click Here](#)**

## UPCOMING EVENTS

Sunday 10 March at 10:00am

Mothering Sunday Service in  
Church



Wednesday 20 March at 2:00pm

Lenten Meditation in Church

There is no meeting in April.

Please let us know in good time if you require transport to any of the meetings.

For more information

Ann Rudd, 0151 336 1513

## Thank You

*...from Charles Thompson  
Mission*

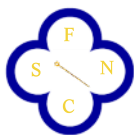
*Thank you, to all those who donated  
towards our Christmas Toy  
Appeals, Christmas Food Hampers  
in 2023.*

*With **your** help we were able to  
provide a gift to 604 children and  
more than 250 Food Hampers to  
families in the local community.*

*Plus we were able to sit folks down  
for a Christmas day meal, which  
was appreciated by those who came  
along to enjoy the festive season in  
a warm and friendly atmosphere.*

*On behalf of the team and all those  
who have benefited from your kind  
donations, we would like to thank  
you for  
your  
generosity  
through  
out the  
year and  
thank you  
for  
partnering  
with us. We could not do what we  
do, without you.*





F O S N C

Friends of St Nicholas' Church

Why your support is so vital

- To preserve the fabric of our historic building for future generations
- To continue to provide access for the community and visitors
- To contribute towards running costs, repairs and improvements
- To maintain the churchyard and its environs

***Not know your Merlot  
from your Malbec?***

***Shiraz from Chardonnay ?  
or Sauvignon from Sancerre?***

***Come and join us on Saturday 16 March  
Gladstone Village Hall 7:00pm***

***A Local Community Event***

# ***Cheese & Wine Tasting Evening***

***A wonderful selection of fine wines will be provided by  
Tom Innes of Fingal-Rock Wine Merchants (with  
a selection available to order on the night),  
plus various cheeses and nibbles to enjoy***

***TICKETS £20 PER PERSON  
Contact Ron Curnow 07710 294 931***

***A Community Event in Aid of Friends of St Nicholas' Church***





# CHURCH LIFE & TIMES AT ST MICHAEL'S SHOTWICK

More details of church activities and  
contacts can be found at:

[www.shotwick.org.uk](http://www.shotwick.org.uk)

# ***A Special Wedding Day at St Michael's Church in Shotwick***



**Wedding of Katie May Berry  
and James David Tolley  
22 December 2023**

**Thank you** to everyone at Shotwick church for making our big day so special. We are so grateful to the Church and the local community for all their effort and support on the lead up to our wedding day, and making us feel so welcome.

The church is absolutely incredible, and it's wonderful to have a connection and so many pictures in a church which is so historic.

**Thank you** also to Rev John Coyne for a beautiful wedding ceremony.

For us it was the most perfect day!

**Katie & James**



# **Shotwick**

## **News & Events**

**St Michael's Church**

### **Harp Concert**

We will welcome Bethan Griffiths at St Michael's for the third consecutive year. Once again it promises to be an evening of delightful music, followed by light refreshments. All Welcome. Tickets £15, available from Monday 6 May. Contact Rosemary Taylor 07762 605126



### **Spring Celebrations**

On 4 May 10:00 am – 4:00 pm there will be a Spring Celebration when 25 A0 sized posters will be presented with art work on a Spring theme or scientific data on insects birds and mammals. In addition there will be items on Village history and workshops on metal detecting, bell ringing, moth and bird identification and on how the Church organ works.

### **Outdoor Learning with Jenny Sneddon**

Jenny Sneddon is running outdoor learning sessions in local primary schools.

Which way is the local wind blowing?

We had prevailing south westerly winds for much of autumn and winter until mid-January when the wind changed to a prevailing north easterly wind.



### **Other Outdoor Learning Activities**

Bait preference experiment for squirrels: which type of dried fruit wrapped in masking tape is taken furthest away from the pole as identified by the number of knots tied in the end of the red wool tail?

Mammal footprint tracking tunnels for mammals at Church Farm Capenhurst corroborated by a camera trap strapped to a tree.





# THE LIFE & TIMES OF OUR VILLAGE COMMUNITIES

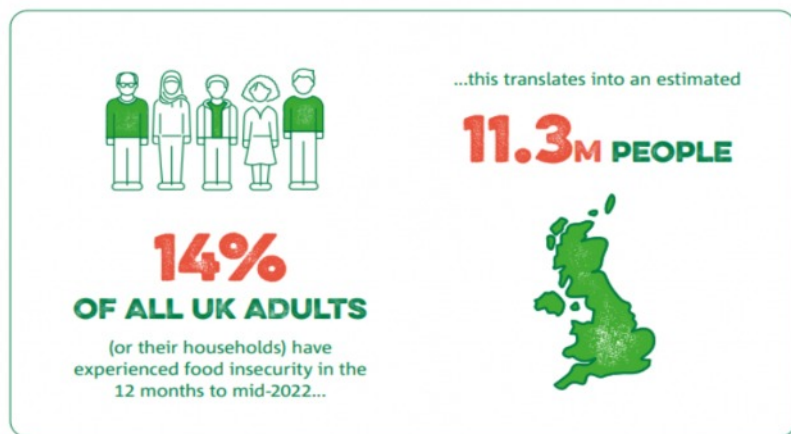
BURTON  
PUDDINGTON  
AND SHOTWICK

It's February at the Foodbank. Demand for our services has been at about the same level as it was last winter, but this is still more than 40% higher than it was the winter before that. We see the headline rate of inflation falling (4% is the sort of number reported). It's falling for essentials (housing, food, energy) too, but these are still running at higher levels than the average – 6% for rental, 15% for food, and 15% for energy. And, of course, only negative numbers mean that prices are actually falling.

With that in mind, Trussell Trust's report "Hunger in the UK" that examined this subject in 2022 is still instructive.

The study found that 1 in 7 households experienced food insecurity (have run out of food, have reduced meal sizes, have eaten less, gone hungry, or lost weight through lack of money) at some point in the period from mid-2021 to mid-2022, but that more than two-thirds of these had not received food aid from any foodbank (not just the Trussell Trust foodbanks). How to serve those in need who we currently don't reach is a continuing concern for the foodbank.

### WHAT IS THE SCALE OF HUNGER IN THE UK?



**To volunteer or donate just *Click***

The report concluded that there are three main factors that combine to prevent people from having sufficient income to avoid food insecurity:



- The design and delivery of the social security system is the most significant factor in food insecurity with
  - lack of information about entitlements
  - difficulties claiming and sustaining benefits
  - insufficient income from benefits
  - further reductions from sanctions, caps and debt deductions
- Work which does not provide sufficient protection from financial hardship
  - 1 in 5 people referred to a foodbank are in working households, with insecure work correlated strongly with food insecurity
- Difficulty accessing suitable jobs, especially for disabled people, people with caring responsibilities and parents (especially mothers).

At the Foodbank we hear people's experience with the social security system every day. These personal anecdotes describe an arbitrary, complex, disorienting and discouraging system. The Foodbank Plus link up with the Citizens Advice Bureau can help to navigate this, and can achieve outstanding results for many of the Foodbank clients who are referred to it.

These three factors also take a toll on mental health, so addressing this is the subject of a pilot programme run jointly by Mind, Trussell Trust and Citizens Advice to provide financial advice, counselling and other support.

Foodbanks everywhere depend on donations to continue to support those families and those individuals who are faced with deciding what to do without – shelter, food, energy. Wirral and West Cheshire are no exception to this and rely on our generosity, even though times are harder for all of us.

The local Foodbanks' websites list the most needed food and can take donations.

<https://wirral.foodbank.org.uk/>

<https://westcheshire.foodbank.org.uk/>

Thank you to those who care enough to help provide this support for our neighbours. It is greatly needed and appreciated by clients, volunteers and staff.

**Thank You**

Ian Birch, Volunteer, Wirral Foodbank

WIRRAL FOODBANK  
**FEEDING LOCAL  
PEOPLE IN CRISIS**



# **Burton Mere Wetlands**

It's been a fantastically busy start to the year, despite the weather not knowing what it's doing with storms one minute and sunshine the next. Our new café has been a great success so far as the new team settle in and our events calendar is back up and rolling now.

With rarities like an American Wigeon dropping in, causing a great stir among the keen birdwatchers, and many folks getting fabulous views of Kingfisher, Bittern and Otter, the wildlife sightings have not disappointed either!

January saw us hold some brilliant events for our national Big Garden Birdwatch, with a Big Farmland Walk and a Big Garden Birdwatch id event, there was something for all ages and skill sets. We then had three spectacular days at Parkgate in February with the return of our High Tide Watches. There were excellent views of Hen Harrier, Merlin, Peregrine and the "day flying" Short-Eared Owl, all jostling for a spot to hunt. The highlight went to a very obliging Jack Snipe that many folks got to see and photograph. Don't forget we will be there again on March 11, 12 and 13.

Off for a few days and you miss it all! The first Avocet officially turned up on Sunday 11 February, with nine now. Hopefully many more to roll in, for a busy spring season. As I cast my eye across the reserve, I can see Marsh Harriers bringing nesting material into their breeding area and Shoveler duck and their courtship behaviour, which can only be described as a synchronised whirlpool dance. As you arrive and open your car door you'll be met by a cacophony of birdsong, from the rambling calls of the Great Tit, serenading songs of the Blackbird or the strident cry of the Black-headed Gull. We love them all.



**Otter**

*(Pic John Hewitt)*



**Jack Snipe**

*(Pic James Smith)*



**Male Hen Harrier**

*(Pic Paul Jubb)*

The Grey Herons seem to be getting more active by the day! Steady reports are coming as they gather and look to pair up. Come March it's always exciting to hear the Little Egrets making their very humorous mating calls along with the leggy Great Egrets perching up high in the treetops opposite Marsh Covert Hide. This year we hope to see the return of the Spoonbills, to finally try to breed, fingers crossed.

Bluebells are steadily on their way up. We hope they won't be too early and, come April, they will be in full bloom at opposite ends of the reserve .

Mid-February we held a great family event - Nest Box Building! With our help, keen families built a bird box, then took them home for the garden. There will be some very happy birds this spring. Remember, be patient, there's always next year and birds will also use them for shelter in the winter.

March 9 -17 we will be offering a free drink in conjunction with the National Lottery. A huge thanks to them for helping us connect local communities with nature at RSPB Nature Reserves. Simply show a National Lottery ticket or scratch card in the café when ordering.

April will bring our egg themed Family Quiz Trail and we hope to bring you more family activities to keep your little ones busy over the Easter break.

Check our 'Events' page online for details of how to book onto any of our events **[Click Here](#)**

For further details on any of the reserve activities and events, please see our website:

[www.rspb.org.uk/burtonmerewetlands](http://www.rspb.org.uk/burtonmerewetlands), or  
[www.rspb.org.uk/parkgate](http://www.rspb.org.uk/parkgate) for Parkgate events.

Alternatively call us on 0151 353 2720

***Just drop in – we're open every day!***



**Grey Heron**  
(Pic RSPB)



**Spoonbill**  
(Pic RSPB)



**Nature Reserve**  
(Pic RSPB)



**giving  
nature  
a home**



NATIONAL GARDEN SCHEME  
Garden Open For Charity



# Briarfield

The Rake, Burton, Neston,  
CH64 5TL

**Sunday 14 April**

**1 - 5pm**

Adults £5 Children free

---

The National Garden  
Scheme is a charity that  
supports health and  
nursing charities  
through garden  
openings across the UK

---



PLANTS FOR SALE



TEAS



Registered Charity No. 1136441

More information at [ngs.org.uk](http://ngs.org.uk)





# Cheshire Police

## Police Community Support Officer



Police Community Support Officers (PCSOs) work with police officers and share some, but not all of their powers. .

A PCSO can, for example:

- give someone a fixed-penalty notice, e.g. for littering
- demand the name and address of someone being anti-social
- take alcohol off a person aged under 18

A PCSO can also ask a police officer to arrest a person.

The power of PCSOs can differ between police forces but they must wear a uniform clearly marked 'PCSO'.

As many will know, Linda Conway, our PCSO, has been assigned to a new beat area and is no longer covering Little Neston, Burton, Puddington & Shotwick.

Linda says:

*"I will be sorry to leave the area after almost 17 years, it really doesn't seem that long and I will take with me many wonderful memories of my time here."*

We wish Linda all the best in her new beat and extend many thanks for all she has done over the years.

Our new PCSO is Wendy Dalton and we look forward to getting to know her.

Phone: 07898 651 828

Email: [wendy.dalton@cheshire.police.uk](mailto:wendy.dalton@cheshire.police.uk)

# ***Events & Activities at Ness Botanic Gardens***



## ***Mothering Sunday at Ness***

***Sunday 10 March 2024***

The Wirral 3Ls choir are back and will be singing in the visitor centre. Treat Mum to afternoon tea in the Hulme room, please contact 0151 795 1699 to book.

## ***Spring Family Trail***

***Saturday 23 March to  
Sunday 21 April 2024***

***10:00am - 4:00pm***

Join us this Spring to see all the amazing colours Ness Botanic Gardens has to offer, there is something for all the family to enjoy! There is no need to book, the trail is free as part of your garden admission and is designed for children aged 3 – 12 years. It will take approximately 40 minutes to complete.

***Check the What's On section  
[Click Here](#)***



# In the Garden

with Flori Bunda

## *Spring is Upon Us !*

Longer days and the arrival of Spring flowers. Some holly with berries was saved as most berries provided food for the birds.

Two hebes have flowered throughout the Winter (purple and white) and the viburnum shrub has lovely pink/white florets, so useful for vases indoors.

The border behind the greenhouse was cleared but unable to be 'planted up' as it has been flooded!

Once again, our Christmas tree was taken from our blue spruce. It does not drop needles and lower branches are perfect for decorations.

The green spears of bulbs are popping up everywhere and first to show were a small clump of *Galanthus nivalis* (snowdrops). Most varieties of snowdrops are in situ in the small shrubbery.

Lady Macon is a camellia and not always in bloom. However, this year, there are masses of buds to be seen. These when opened are double pale pink. White Swan did not flower last year but again has many buds. When it is very frosty, all six camellias are fleeced, producing some really odd shapes!!



The brown florets on the hydrangea will be taken off.

The greenhouse/seed trays will be washed in preparation for seed sowing.

The borders also need to be tidied – it is a busy time but very rewarding.

Once again, the rockery is a mess and is on the list of 'jobs'.

The blackbirds are to be seen in the garden, one thrush, a greater spotted woodpecker, blue, great, long-tailed tits, chaffinch, and gold/green finches. Of course, the list would not be complete without Robbie Robin. .

### *Tasks to be getting on with:*

- Again, clear moss from paths
- Remove fallen wet leaves
- Plan the garden

*Above all - enjoy your gardening*



*Flori Bunda*



# Cheshire West & Chester Mobile Library

THE MOBILE LIBRARY VISITS BOTH  
BURTON AND PUDDINGTON

Visit the electric mobile library

Residents may have noticed the new  
mobile library vehicle from  
Cheshire West and Chester.

It is fully electric and therefore much cleaner and greener.

The vehicle is fully accessible and includes a hearing loop. It also has  
other sustainable features including solar panels and LED lighting.  
Other improvements include an awning for summer activities and  
onboard Wi-Fi and digital access for customers.

There is a wide range of stock on offer, including adult and children's  
books as well as audiobooks. It also provides access to the Library  
Management System, enabling customers to borrow books from  
across the library service and to make reservations, as well as  
updating their library accounts.

Mobile Library staff can also provide online Council information and a  
Council enquiry service. Cheshire West Mobile Library will be in  
Puddington from 10:40am to 11:00am and  
at the GVH in Burton from 11:10am to 11:50 oam  
on the following dates:

Friday 22 March

Friday 12 April

Friday 3 May

Friday 24 May

Friday 14 June

Friday 5 July



**Make the most of this valuable facility !**

# Cheshire West & Chester Library Services

## Share your views on library & museum services in Cheshire West and Chester



Cheshire West and Chester Council delivers library and museum services across the whole of the borough and we're asking for residents' views on these services.

Our consultation launched on Monday 5 February and will be open for eight weeks, asking for feedback on a number of proposals on how we operate in the future.

## Where can I share my views?

There are several ways to take part in the consultation.

All the documents and a survey are available online - see below

A paper version of the consultation documents and survey is also available at all Cheshire West libraries and museums.

## Where can I talk to someone about the proposals?

You can come and talk to library services about the proposals on Friday 1 March from 9:00am to 1:00 pm at Neston Library

## What happens next?

When the consultation closes, library and museum services will then use the feedback to help shape the future museums and libraries service offer.

A summary of the consultation findings will be published on the Council website in Spring 2024 alongside an update on the outcome of any decisions taken and the next steps.

For full details of the consultation please see the website:

[www.cheshirewestandchester.gov.uk/librariesandmuseums](http://www.cheshirewestandchester.gov.uk/librariesandmuseums)



Theatre4All.nw  
proudly present.....  
Ben Crocker's



# SLEEPING BEAUTY



23rd & 24th March 2024

Gladstone Village Hall,  
Burton CH64 5TH

Sat 7.30pm & Sunday 2.30pm

**Adults £12.50**

**Concessions £10**

**Children £7.50**

[Theatre4All.nw@gmail.com](mailto:Theatre4All.nw@gmail.com)

07969040767  
for details



# Registered Osteopath

## Balance Health and Wellness

Back and Neck Pain  
Hips and Knees  
Headaches and Migraines  
Sciatica  
Sports Injuries



Robert Day BSc(hons) Ost DO

Homewood

Dunstan Lane, Burton CH64 8TG  
[www.Registered-Osteopath.com](http://www.Registered-Osteopath.com)

07879 22 55 62

**J.F. O'REGAN**  
CHARACTER ROOFING SPECIALIST

t. 07784 007 767

w. [www.jforeganroofing.co.uk](http://www.jforeganroofing.co.uk)

e. [jerrysgarnfishing@hotmail.com](mailto:jerrysgarnfishing@hotmail.com)

Roof installation, refurbishment and repair - character and period building roofing specialist.

- |                     |                      |                |
|---------------------|----------------------|----------------|
| ■ Listed Buildings  | ■ Schools            | ■ Tonne        |
| ■ Period Properties | ■ Churches           | ■ Welsh Slates |
| ■ National Trust    | ■ Decorative Slating | ■ Lead Work    |
| ■ English Heritage  | ■ Westmorland Green  | ■ Roof Tiles   |

Whatever your specific requirements, for any form of slating and tiling, or for more specialised character roofing and lead work you can be assured that J.F. O'Regan can be relied upon.

Call Jerry on **07784 007767** for expert advice today!



WELSH | TONNE | RANDOM | SLATE SPECIALISTS

# COMPLEMENTARY HEALTH THERAPIST

## HEALTH ~ BALANCE ~ WELLNESS



### Treatments offered include:

- Lymphatic Drainage
- Remedial Massage
- Cranial Therapy
- Indian Head Massage
- Talking/Listening Therapy
- Natural Face Lift
- Aromatherapy
- Reflexology
- Hopi Ear Candling

Help & Advice on Lifestyle, Nutrition & Wellbeing

IN TRAINED & CARING HANDS  
WITH OVER 30 YEARS EXPERIENCE

DUNSTAN LANE, BURTON  
OSTEOPATHY & NATURAL HEALTH CLINIC, WEST KIRBY  
EMAIL: HELENREID13@HOTMAIL.CO.UK

# 07712 590 269



## VICTORIA'S SANDWICH

### Local Artisan Baker

Based in Willaston Village

Come and see our lovely Artisan bakery in Willaston Village high street. Look out for our black and gold sign above our shop.

Wednesdays 9.30am – 4.00pm  
Thursdays 9am – 4.00pm  
Fridays 9am – 4.00pm  
Saturdays 9am – 2.00pm

- Artisan Bread baked daily
- Real Sourdough
- Artisan Sausage Rolls, Pies & Quiches
- Handmade Doughnuts
- Delicious Traybakes
- French breakfast pastries
- Freshly made sandwiches on homemade Baguettes
- Takeaway Lavazza Coffees & Selection of Teas

Why not give us a call 07437823890 Email [victorias.sandwich97@gmail.com](mailto:victorias.sandwich97@gmail.com)  
To see our Menus follow us on Facebook, Instagram [victorias\\_sandwich](#)





*Our professional staff have a wealth of experience arranging funerals for bereaved families, serving Wirral and Merseyside.*

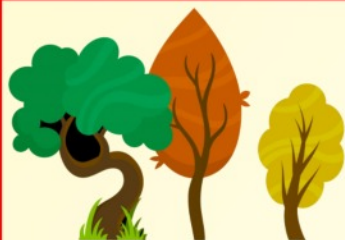
*At Charles Stephens our aim is to ensure that you have the minimum of worry and inconvenience at a time of bereavement. We are keen to offer advice and support wherever necessary to help with your funeral arrangements.*

*Our six funeral homes, situated across Wirral, are specifically designed to cater for all your needs with comfort, dignity and respect. Each and every member of our team is trained to the highest level and we support the attainment of relevant professional qualifications at all levels.*

*An Independent Family Business  
Established 1896  
Fully Qualified Staff  
24 Hours, 7 Days a Week  
Pre-paid Funeral Plans*

Clifton House, 215, Bebington Road,  
Birkenhead, Merseyside, CH42 4QA  
Tel: 0151 645 4396

✉ [reception@charles-stephens.com](mailto:reception@charles-stephens.com)



**JOEL BLAKEMAN**  
**TREE SURGERY**  
**HEDGE CARE & LOGS**

**BURTON-IN-WIRRAL**

**PADDOCK - FARM - WOODLAND - GARDEN**  
**FULLY INSURED & PROFESSIONALLY QUALIFIED**

**TREE FELLING - REDUCING - HEDGE CUTTING**  
**CHIPPING - STRIMMING - CLEARING**

**Seasoned Logs for Sale - Delivered & Stacked**  
**HARDWOOD, SOFTWOOD & MIXED BAGS DELIVERED TO YOUR DOOR & STACKED**  
**BUILDERS BAGS FROM £75 - SMALL NETS £6 (MINIMUM 6 NETS)**

**07880 553 775 or 0151 336 7435**

[maresfieldfarm@btinternet.com](mailto:maresfieldfarm@btinternet.com)



# The Celtic Arms

NORTHOP COUNTRY PARK

BOOK NOW  
01352 840423



## MID WEEK TREAT

2 courses £13.95  
3 courses £16.95  
Available Monday to  
Friday 12 - 9.00pm  
Saturdays 12 - 4.00pm  
Available from the 2nd of January



## SUNDAY LUNCH

SET MENU  
2 courses £16.95  
3 courses £20.95  
We also have a  
great children's menu



[www.thecelticarms.co.uk](http://www.thecelticarms.co.uk) | The Celtic Arms, Northop Country Park, Northop, CH7 6WA

# WIRRAL FUELS



**DOMESTIC, COMMERCIAL & FARM FUELS**

# 01244 851200

[www.wirralfuels.co.uk](http://www.wirralfuels.co.uk)

[orders@wirralfuels.co.uk](mailto:orders@wirralfuels.co.uk)

**HEATING OIL - BEST SERVICE - COMPETITIVE PRICES**



**Open Daily 9.30am to 4.40pm**  
**Chapel House Lane, Puddington**

**Monday - Tuesday - Wednesday - Thursday**  
**Friday - Saturday - Sunday**

**Toasties - Sandwiches - Panini - Pizza - Muffins**  
**Barista Coffee - Teas - Cold Drinks - Frappe**  
**Cakes - Cream Teas - Ice Cream**

**Room Hire - Special Events - Music Evenings**

**Accessible & Dementia Friendly**

**For more information [Click Here](#)**

Rewilding Specialists

## **WIRRAL WILDLIFE LANDSCAPING**

Specialists In Creating:  
 Wildlife Ponds, Eco-Friendly Gardens  
 & Landscapes



Wildlife Ponds



Landscaping



Rewilding



**TRISTAN  
SKELLY**

**LANDSCAPING SPECIALIST**

☎ 07479455170

✉ [contact@wirralwildlifelandscaping.com](mailto:contact@wirralwildlifelandscaping.com)

🌐 [www.wirralwildlifelandscaping.com](http://www.wirralwildlifelandscaping.com)



### Wanted

Books, travel journals, manuscripts, ephemera  
and photographs from 1500 to the 1960s  
(and occasionally beyond!)

We purchase collections, libraries and single items.

We can also provide valuations for probate or  
insurance purposes.

Jonathan Frost Rare Books Ltd  
jfrbooksLtd@gmail.com  
0151 7331501 or 07766 711103



We clean your oven ..... so you don't  
have to.

Call today to have your oven, hob,  
extractor or Aga professionally cleaned

### Contact Phil Cooper

Tel. 0151 7212030

Mob. 07812 252533

Email philcooper@ovenwizards.com

www.ovenwizards.com

## WIRRAL & CHESTER CHIMNEY CLEANING Call Mr Walker

Bird Guards

Chimney Cows Fitted

Same Day Cleaning Service Available

Cleanliness Guaranteed  
Brush & Vacuum



2 Stonebank Drive  
Little Neston  
CH64 5DP

**Tel: 0151 336 7274**

*If you need  
some publicity,  
this space  
could be yours  
to advertise  
your business  
or local  
activity*

**0151 271 4278**



## *Community & Society Information*

### **THE BURTON SOCIETY**

Thursday 7 March - Roger Devonside will be telling us about his death-defying high-flying exploits as one of the world's handful of 'Wing-Walkers'

Thursday 4 April - AGM followed by  
'A Modern Pilgrimage'

Nigel Griffiths recounts his varied experiences when he walked from Lichfield to Burton, being put up by parishes along the way, in order to raise funds for the refurbishing of Burton's church bells  
For further details please contact Renee Syme 336 5852.

### **THE PUDDINGTON SOCIETY**

For information on activities & events please contact [puddingtonsociety@gmail.com](mailto:puddingtonsociety@gmail.com)

### **BURTON & NESTON HISTORY SOCIETY**

Thursday 14 March 'The Sinking of HMS Thetis'  
Speaker: Derek Arnold

Thursday 11 April 'E C Hardman and his house in Liverpool'.  
Speaker: Roy Wainwright

Gladstone Village Hall. Doors open from 7.45 pm, talks start at 8pm. Visitors welcome.  
More information at: <https://sites.google.com/site/burtonnestonhistory/home>

### **BURTON WALKING GROUP**

For more information please contact Gilly Mansfield 0151 336 4297

### **BURTON BRIDGE CLUB**

Burton Bridge Club meets on Monday Evenings  
Gladstone Village Hall at 7:15pm to play Duplicate Bridge  
For more information please contact Hazel Huxley on 0151 336 2288

### **BURTON RESIDENTS' ASSOCIATION**

Promoting & protecting the interest of Burton Village. Membership is open to all residents.  
[burtonresidentsassociation.co.uk](http://burtonresidentsassociation.co.uk)

### **FRIENDS OF HAMPSTONS WELL**

Friends of Hampstons Well brings together a community of people who care for and maintain this ancient site  
For more information, please contact the Secretary at  
[friendsofhampstonswellburton@gmail.com](mailto:friendsofhampstonswellburton@gmail.com)

### **FRIENDS OF BURTON MANOR GARDENS**

For more information please contact 0151 336 6154 or email [burtonmanorgardens@gmail.com](mailto:burtonmanorgardens@gmail.com)

*Magazine Administrator - [sue@suebirch.com](mailto:sue@suebirch.com)*

*The Parish Magazine is published by the PCCs of  
St Nicholas' Church, Burton-in-Wirral.  
and St Michael's Church, Shotwick.*

*Publication is made possible through the contributions and  
donations of members of both churches, Friends of St Nicholas'  
Church, and Friends of St Michael's Church, as well as  
residents, advertisers and other members of the public.*

*Neither PCC is responsible for the content or claims of  
advertisers nor do they warrant or endorse any such content.  
Consequently no warranties or endorsements should be inferred.*

*The PCCs and editorial team retain the right to edit items  
submitted for publication. The editorial team's decision is final.*

*Copies of this magazine can be found at*

**[www.burtonchurch.org.uk](http://www.burtonchurch.org.uk)**

**[www.shotwick.org.uk](http://www.shotwick.org.uk)**

*This magazine is published bi-monthly, six times a year.  
It is distributed to residents in the villages of Burton, Shotwick  
and Puddington and to others.*

*In addition the magazine is available on the St Nicholas' Church  
and St Michael's Church websites*

**To discuss opportunities to advertise here contact**



**0151 271 4278 or 07597 051 048**



**[burtonchurchcomms@btinternet.com](mailto:burtonchurchcomms@btinternet.com)**

*St Nicholas' Church, Burton-in-Wirral is a Registered Charity No. 1184831  
St Michael's Church also has charitable status as part of the Church of England*

