



The Parish Magazine

& Community News

St Nicholas' Church, Burton-in-Wirral

February & March 2022

EARLY SPRING EDITION

In This Edition

A Personal Reflection by Revd Geoffrey Parsons

Platinum Jubilee & Organising a Village Street Party

Sword Dancing Comes to Burton

*Growing & Thriving With God
in Our Community*

Church Directory

- who to contact ...



<i>Enquiries</i>	<i>Church Matters</i>	07471 890 827
<i>Lay Reader Team</i>	<i>Ruth Abbott</i>	342 5032
	<i>Basil Keys</i>	936 1403
	<i>John Morris-Best</i>	327 7873
	<i>Philip Hillman</i>	309 2761
<i>Churchwardens</i>	<i>Nigel Griffiths</i>	336 3621
	<i>Ivor Thomas</i>	07887 895 707
<i>Deputy Churchwarden</i>	<i>Tony Carter</i>	336 5446
<i>PCC Hon. Secretary</i>	<i>John Vinson</i>	336 8350
<i>PCC Hon. Treasurer</i>	<i>Bryan Blakeman</i>	336 7435
<i>Gift Aid Secretary</i>	<i>John Miles</i>	336 4972
<i>Verger Duties</i>	<i>Ann Warr</i> - Services	336 2747
	<i>Judy Redmond</i> - Open & Close	336 3643
<i>Safeguarding Officer</i>	<i>Ivor Thomas</i>	07887 895 707
<i>The Friends of</i>	<i>Robin Cowan</i> - Chairman	306 4587
<i>St Nicholas' Church</i>	<i>Gill & John Miles</i> - Administration	336 4972
<i>Music & Singers</i>	<i>Alison Carter</i>	336 5446
<i>Mothers' Union</i>	<i>Ann Rudd</i>	336 1513
<i>Junior Church</i>	<i>Amanda Ankers</i>	336 3998
<i>Lay Synod</i>	<i>Basil Keys</i>	936 1403
<i>Bell Tower Captain</i>	<i>Jane Davies</i>	353 0074
<i>Parish Magazine</i>	<i>Sue Birch</i> - Administrator	271 4278
<i>Administration email</i>	burtonchurchcomms@btinternet.com	

CHURCH SERVICES



Massey Chapel

February

- 2 Wednesday
10:15 am Holy Communion
- 6 Fourth Sunday before Lent
10:00 am Family Worship
4:00 pm Evensong
- 9 Wednesday
10:15 am Holy Communion
- 13 Third Sunday before Lent
10:00 am Morning Worship
- 16 Wednesday
10:15 am Holy Communion
- 20 Second Sunday before Lent
8:45 am Holy Communion
(Traditional Service)
10:00 am Family Communion
- 23 Wednesday
10:15 am Holy Communion
- 27 Sunday next before Lent
10:00 am Morning Worship

March

- 2 Ash Wednesday
10:15 am Holy Communion
- 6 First Sunday of Lent
10:00 am Family Worship
6:30 pm Evensong
- 9 Wednesday
10:15 am Holy Communion
- 13 Second Sunday of Lent
10:00 am Morning Worship
- 16 Wednesday
10:15 am Holy Communion
- 20 Third Sunday of Lent
8:45 am Holy Communion
(Traditional Service)
10:00 am Family Communion
- 23 Wednesday
10:15 am Holy Communion
- 27 Fourth Sunday of Lent
Mothering Sunday
10:00 am Morning Worship
- 30 Wednesday
10:15 am Holy Communion

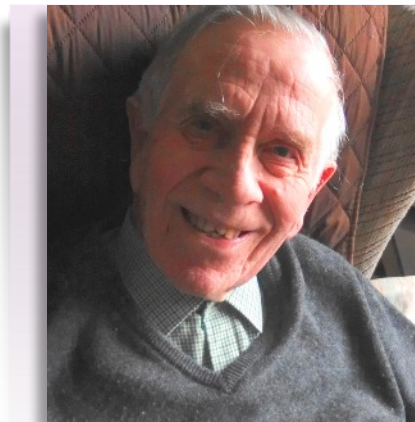


April

- 3 Fifth Sunday of Lent
10:00 am Family Worship
6:30 pm Evensong

Revd Geoffrey Parsons

A Personal Reflection on Hope & Expectations



Revd Geoffrey Parsons
Long Standing Church Member &
Retired Vicar of Several Parishes

What a wonderful time of the year this is.

We look forward to the sun rising earlier, and longer hours of daylight – even while winter is still with us. ‘If Winter comes, can Spring be far behind?’



My father’s favourite flower was the snowdrop. Even while all around was seemingly dead, the first snowdrop in bloom filled him with joy each year.

It was Candlemas when he lay on his deathbed, and just possible to find a few snowdrops – to place at his bedside.

‘Lord, now lettest thou thy servant depart in peace’

Winter has come to us all recently. The restrictions of the pandemic have made life hard for many. It is difficult to know what lies ahead. Plans for Spring and Summer are uncertain.

Yet nature still has her way. Gardens still grow and flourish. Hedges turn green again, and trees will be dressed with new buds.



The hope of new life surrounds us on every side. Let us take such hope to heart, for our own lives.



Continued ...



A Parish Church is a beacon of Light in the community it serves. It offers sure and certain hope. Here at St Nicholas', the constant light of God in Christ shines in the commitment of those who are giving of themselves - their time and their gifts - in response to God's love.

The word 'Church' means 'belonging to the Lord'. Our gifts are from God - to be used to make known his love for all. His grace in Jesus Christ is forever at work, forever new - here is a new Spring - light in our darkness, hope where there was cold despair.

'Church' is greater than any building - it is a living Community, transformed by faith and trust in Jesus Christ.

We look forward with trusting expectation to see God's on-going purpose for his Church in this Parish. What a wonderful time this is.

***For unto us a Child
is born, to us a Son
is given.***

***He will be called
Wonderful
Counsellor, Mighty
God, Everlasting
Father, Prince of
Peace.***

***Of the increase of
his government
and peace there
shall be no end.***

May His Peace be yours.

Geoffrey Parsons



***From the
Parish Registers***

Funerals

20 December

- Albert John Iveson

Church Services at St Nicholas' Church

Until We Have a New Vicar

As you may know, services in church have continued as comprehensively as can be arranged in the interregnum since Cathy moved away to her part-time post in Cumbria. The only significant difference is that there is a limit on the number of times that we can reasonably ask priests who are well-matched to our parish to be kind enough to preside and preach at Holy Communion services.

Up to Now

For that reason, we have thus far had to limit the 'prayer book' traditional Communion services to Wednesday mornings (when visiting priests are more likely to be able to come), and 'common worship' modern Communion services to once a month on Sundays.

From Now Until Easter

The priests who are being so good as to help us out have kindly agreed, once a month, to preside at two, not just one, Communion services on the third Sunday of each month. On those Sundays there will be a prayer book Communion service at 8.45 am and a common worship Communion service at 10:00 am, (i.e. as was normal when Cathy was here). The full monthly list of services is attached.

What You Can Do

Please show your support of our visiting priests and lay readers by coming to the services if you feel able to do so.

The priests who help us out are delightful, and their sermons are well worth hearing. Similarly, our lay readers are putting in redoubled time and dedication to keep everything as near normal as possible until we get our new vicar, and we are very fortunate in having the benefit of their thoughtfully prepared talks and prayers.

We take full measures to minimise the Covid risk, (tiresome though these temporary measures may be!). Please don't let concern about infection keep you away, unless you are especially at risk for other reasons.

We have a wonderful and welcoming church that matters. Your support is vital if it is to have a new vicar and if it is to be here for the future.

Nigel Griffiths

Nigel Griffiths
Churchwarden





The Spring Term Has Begun !

It's been a busy first few weeks of the Spring term with lots of learning taking place both indoors and out in spite of the change in temperature!

We had a fantastic lead up to Christmas in school and were delighted to have been able to invite parents/carers in. The PTA organised a superb Christmas Fair - we're very grateful for their commitment to the school. The whole school went to the Floral Pavilion to see a pantomime - we had the theatre to ourselves, what a privilege! For some children it was their first school trip and they were over the moon to be on a coach! Closer to Christmas we had our KS1 Nativity and KS2 Carol service - the children shared the Christmas message in a beautiful way. They were confident and delightful in their performances. We also had our Christmas Dinner Day when we had a wonderful lunch and a visit from Father Christmas - he told all the children they'd been 'good boys and girls'!

The School has a long history of high quality education by providing today's children with an enjoyable and enriching experience which equips them for lifelong learning and a desire and ability to have a positive impact on the lives of others.

In order to achieve this, we use 'The joy of the Lord is your strength' as our inspiration. We promote the Christian values of service, thankfulness, compassion, endurance, creativity, peace and justice. We also provide a broad and engaging curriculum which promotes communication, exploring, reading and believing throughout. We encourage the involvement of parents, and believe that the development of a partnership between home and school is vital to the success of a child's education.

As a part of the local church and village communities, we aim to provide a stimulating and safe environment where all children can reach their potential, not only academically, but socially, physically, emotionally and morally which in turn will enable them to succeed in the future for themselves and for others.

Helen Friend

Executive Headteacher





Learning stories from the Bible through craft and play

Your Invitation

To Help Celebrate a Very 'Messy' Mothering Sunday

Come and join us for some messy fun learning stories about mothers from the Bible – and make something you can take home for your Mummy!

Saturday 9 March 2022

GLADSTONE VILLAGE HALL, BURTON

4:00pm – 6:00pm

Everyone Welcome

& All Food Provided!

We ask only for a small contribution to help cover our costs towards the hire of the hall, craft materials and food – suggested £3 per child



The date is provisional based on the latest Government guidelines



Tales From



As the new year begins the increase in the number of people seeking help has continued. Unfortunately, we're seeing more families now, in addition to those that are receiving foodbank parcels through schools. Although demand for the foodbank is rising it's still (just) below that of late 2019/early 2020. And, thanks to your continued kindness, the foodbank is able to meet the current demand.

WIRRAL FOODBANK
**EMERGENCY FOOD
FOR LOCAL PEOPLE
IN CRISIS**

Covid precautions are still being taken in foodbank centres – despite everyone's desire there's no return to coffee and a chat on the cards. However, as we all become more comfortable (blasé?) with living with Covid the centres are helping those clients whose need is for more than food and a few minutes' conversation. Most deeper problems need the services of Foodbank Plus that are provided by counsellors from Citizens' Advice, but sometimes a longer, sympathetic chat and the use of a phone can make all the difference.

It's good to see that we still see most clients just the once or twice – it's an emergency or something unusual that's happened and once past that it's back to normal. And there is support for the longer term in most cases.

Thank you.

<https://wirral.foodbank.org.uk/>

<https://westcheshire.foodbank.org.uk/>

As always, many thanks to those who support the Foodbank with food and cash donations which make all the difference to so many people.



FOOD DONATIONS

We urgently require the following food items:

- Tinned Meat
- Tinned Tomatoes
- Squash
- Sugar (small packet if possible)
- UHT Milk
- Instant Mash
- Tinned Fruit
- Jam
- Deodorant
- Washing-up Liquid

Thank you for your support.

VOLUNTEER & DONATE

DONATE MONEY

Big or small, every gift you give helps transform lives.

wirral.foodbank.org.uk

A quiet reflection on behalf of Mothers' Union & upcoming events, by Ann Rudd

SELF RELIANCE

Reflection ...

The COVID-19 pandemic obliged many to 'shield' and self-isolate. This sometimes creates a siege-mentality of relying solely upon ourselves. But it also generated amazing acts of kindness and generosity; and a very practical Christianity was released which enabled us to really 'Love our neighbour as ourselves'. In this world we are Jesus' hands, feet, ears and eyes, and as we use his resources to support one another, we do not have to rely on our own strength but on God and his Holy Spirit. Wherever we are, so is God and his Holy Spirit.

Prayer

*Generous God, we are so grateful for
all you have given to us in life.*

*Help us to use your resources wisely
to bring change for good
in the world,*

and enable others to do the same.

Amen.

The words above, from the Mothers' Union Prayer Diary, lead us into February.

On Wednesday, 16 March at 2:00pm there will be a short Lenten service in church, followed by our Annual Meeting.

Coffee Morning

Everyone Welcome



Tuesday 1 March

**SHROVE TUESDAY COFFEE
MORNING**

in Church

10.00am to 12 noon

Coffee, Cakes, & Occasional Pianist
Catch Up With Friends

BRIARFIELD GARDEN



Wander Among the Snowdrops.

Briarfield Garden will be open as part
of the National Garden Scheme on

**Saturday and Sunday,
19 and 20 February**

11:00am to 4:00pm.

Entry £5, children free.

There will be an opportunity to buy
snowdrops and other winter flowering
plants. But sorry, no teas!



And so, another year in the gardens has drawn to an end.

A strange year in many ways – the effects of climate changes, the pandemic, the lockdowns not to mention the politics! We are very grateful to all the volunteers who continued to turn up, week in, week out to keep the gardens looking at their best, despite everything that was going on around them. Come rain or shine, Monday and Wednesday mornings continued to be very busy; sowing, planting, harvesting – whilst others quietly came and went on other days, cutting the grass, looking after the bookshop, doing the accounts, etc. Thank you to everyone.

Building around the site continued apace, although it looks like it will still be quite a while before any of the properties are occupied.

Work on carrying out essential repairs to the glasshouse itself has started. A surprising requirement considering it's only some ten years since it was completely rebuilt! We are very fortunate that, due to the efforts of our treasurer in securing some grants, we can afford to have the work done. Once completed it's planned to improve the heating and to upgrade the kitchen in time for next Spring's bookings – lockdowns permitting!

The gates to the walled garden are open between 10:00am and 4:30pm. Access to the perimeter walk is available outside these hours.

If you would like to become a Friend of Burton Manor Gardens please contact us by telephone on 0151 336 6154,

by email burtonmanorgardens@gmail.com or

by visiting our website at friendsofburtonmanorgardens.chessck.co.uk

Memories of Barn End Cottage Burton

Circa 1940 to Present Day

John Roe



After reading the article 'The Houses of Burton & Puddington' in the last edition, John Roe has offered his personal memories of Barn End from the mid 1940s through to present times.

In the 1940s only the half-timbered end of the building was 'Barn End'. It was occupied by a Mrs Hampson, and she gave piano lessons. At this time the front steps ran straight up to the front door. The left-hand side of the building, built of sandstone, was a separate two bedroom dwelling called Rock Cottage. This is where Mrs Cliffe and her daughter Damaris lived, as commemorated on the memorial seat.



Rock Cottage had no water or electricity. Water was collected from a communal tap across the road beside the wall of the Manor sited roughly where a new pedestrian gate has been made.

Old Mrs Cliffe was very tall and thin with black hair. She dressed in black, and kept a black cat which she took for walks on a lead. As young children we were afraid of her and ... we thought she might be a witch!

Bevil Cowan of Rake Farm, adjacent to Rock Cottage, put an outside tap on her garage wall so that there was a much shorter walk for Damaris to collect water in her old age. Damaris was a very happy person and was well known in the village. She supported herself doing cleaning work, and after the death of her mother, kept a dog for company. The family grave is behind the Church near the woods.

When Mrs Hampson sold Barn End in 1953/54 it was to Mrs Roberts who had been living in Doddington (the first house on the left when going up the Neston Road). Mrs Roberts subsequently sold Doddington to Ron and Doreen Colclough who were newly married.

Mrs Roberts had two daughters, Dorothy and Alice, probably in their 30s at this time. Barn End had both water and electricity, and the approach to the front door was altered to the present position. Dorothy was a Sunday School teacher for many decades and was much liked by her pupils who have fond memories of her.

The Burton Society



Established 1971

Thursday, 3 February, 8:00pm Gladstone Village Hall

‘Chile: From Tropics to Icebergs’

Nigel Griffiths describes with photos a journey through this wonderfully improbable country

* * *

Thursday 3 March, 8:00pm, Gladstone Village Hall

‘Stained Glass’

Kate Bayes will be giving us a talk about ‘Stained Glass’, discussing design issues and taking us through the process of creating a stained glass panel/window.

Please come only if you have been vaccinated and wear a mask when moving about

The Burton Society was formed in 1971 in order to provide a setting in which local people could meet and enjoy a wide variety of talks to provide interest, information and entertainment throughout the winter months. We meet on the first Thursday of every month from October to April at 8pm in the Gladstone Village Hall. After the talk, there are refreshments and an opportunity to chat to other members.

Membership: £5 for 4 meetings - Visitors: £2 per meeting

Contact Renee Syme on 336 5852

In the Garden with Flori Bunda



A New Year Awaits !

It is an exciting time of year. New shoots are appearing almost daily and there are buds on the camellias.

Brushfield Yellow was purchased in the Autumn. This is a double camellia and resides in a large pot.



Brushfield Yellow

All the florets on the hydrangeas are brown and will be pruned off when frost is over. The lace curtains are still available to cover tender plants if heavy frost is forecast.

Catkins are in bloom on Harry Lauder (twisted hazel) and 'pussy willows' are appearing on the Kilmarnock.

The mesh has now been removed from various pots and planters and their flowers eagerly awaited.

The sweet pea seeds all germinated but are quite delicate seedlings - they might survive!!

Many damp leaves were removed from the borders and a constant companion was Robbie Robin.

The varieties of Galanthus (snowdrops) have increased, namely nivalis, flore peno (double), elwesii, woronowii, beluga and ikariae. Hopefully, they will all bloom.



Galanthus ikariae

Many birds have visited the garden: blackbirds, pied wagtail, greenfinches, goldfinches, chaffinch, nuthatch, Jenny Wren, of course Robbie Robin, and almost a flock of long tailed tits (10).

Tasks to be getting on with:

- Tender shrubs may need to be covered if frosty weather is forecast
- Clean greenhouse
- Prepare seed trays



Happy Gardening

Flori Bunda

HISTORIC & BOTANIC GARDEN



Ness
BOTANIC GARDENS

TRUST PARTNERSHIP

My name is Jacqueline and since September 2021 I have been part of the garden team at Ness as a trainee on the Historic and Botanic Garden Trust Partnership (HBGTP) scheme. Founded by English Heritage in 2006, the scheme offers 12-month traineeships to address a skills shortage in the horticulture sector.

For 2021-22 there are 12 placement gardens hosting trainees which as well as Ness include Wrest Park, Chatsworth House and Winterbourne Botanical Garden in Birmingham.



I was thrilled to be offered a place to improve my skills and knowledge here at Ness. A couple of years ago I felt ready to make a change from working in admin and customer service so began volunteering in the garden at Ordsall Hall, Salford plus for The Kindling Trust, a market garden cooperative based in Stockport. Jo, Ordsall's head gardener, encouraged me to apply to HBGTP to take the next step in my horticulture career.

Gardening was a big part of my formative years as my family have a love of gardens and the outdoors. My parents are extremely proud that I'm starting this new chapter and can't wait to visit me in the gardens (plus enjoy some lunch in the café!). As a child I was expected to help out in the garden in order to earn my weekly pocket money. My father has been telling me about the new electric strimmer he's bought, so I anticipate I'll be helping him in his garden in exchange for bed and board when I



Ness

BOTANIC GARDENS

The garden team have all been very helpful and supportive. Under their guidance I'll be getting stuck in with all aspects of maintaining the gardens, from using the machinery to propagating in the polytunnels and – of course – plenty of weeding. There's also homework to do – Head Gardener Phil sets me a weekly plant identification test to broaden my botanical knowledge

In October I was fortunate enough to attend a four-day study weekend in West Sussex alongside fellow HBGTPs, plus trainees on similar schemes (Professional Gardeners Guild and the MacRobert Trust). Meeting other trainees in gardens across the UK was very valuable for comparing our experiences and sharing what we've learned so far. For instance, I learned that Chatsworth's famous fountains and cascade are gravity-fed, and cannot operate when water levels are low after dry periods with low rain. Over the four days we were generously welcomed by head gardeners at three different gardens. At Wakehurst Place we were given a tour of the Millennium Seed Bank, where research scientists explained the process and reasons for saving 2.4 billion seeds from around the globe. Tom Brown, Head Gardener at West Dean Gardens, gave us a tour of the estate and beautiful walled gardens. At Woolbeding Gardens (a National Trust estate) we had a preview of a new, flower-shaped glasshouse and a dry garden inspired by the Silk Road. Unfortunately, I'm not able to share any images as it doesn't open to the public until spring 2022, but I can say it is worth a visit if you find yourself in Sussex.

My training continues until August 2022 and I look forward to meeting many of you in the gardens over the coming months. Please do say hello if you see me working the gardens, I would love to hear your thoughts on Ness.

Keep up-to-date with all the news from Ness Gardens by visiting www.liverpool.ac.uk/ness-gardens



Flower Arranging Events in Puddington & Burton

Valentine's Wreath Workshops

Make your own 12" fresh wreath decorated with lush foliage and pretty flowers, beautiful accessories, and fabulous ribbons. All materials supplied – just bring a pair of scissors and an apron.

Thursday 10 February

Gift Cafe, Puddington

6:00pm to 8:00pm

Saturday 12 February

Gladstone Village Hall

10:30am to 12:30pm

Silk Floral Copper Crown Workshop

Come and learn how to create your own beautiful silk floral copper crown.

All materials supplied.

Tuesday 1 March

Gift Cafe, Puddington

10:30am to 12:30pm



|

Continued ...



Mothering Sunday Workshops

Wednesday 23 March

2:00pm to 4:00pm

Friday 25 March

2:00pm to 4:00pm

Saturday 26 March

2:00pm to 4:00pm

Gift Cafe, Puddington

(Afternoon tea provided by Gift Cafe)

Gladstone Village Hall

Gladstone Village Hall

Easter Meadow Box Workshop

Saturday 16 April

10:30am to 12:30pm

Gladstone Village Hall

All materials supplied, just bring a pair of scissors and an apron.

Flower Club

Every second Wednesday at 10:30am at Gift Cafe, Puddington starting on Wednesday 9 February for a lovely hour of flowers!

Each month's club will be seasonal and themed around a central flower or foliage. Each place is £20 which includes all materials and a hot drink.

For more information, prices and to book, contact Emma at Silk & Petal Floral Design via Facebook or call 07936 748 666

BURTON MERE WETLANDS

A Year to remember in more ways than one!

A new year is here once again and for the visitors of Burton Mere Wetlands that means a new bird list! The 1 January is always a popular day in the bird watching world, where lots of avid wildlife enthusiasts head to our reserve to begin a new list of the birds that they can find in a year. In contrast to this time last year, the reserve is open for all to enjoy with just a few safety measures in place to ensure all can visit safely. If visiting, be sure to check with the visitor welcome team for the latest updates.

2021 was a big year for us, not only due to it being Burton Mere Wetlands' 10th anniversary, but with lots of significant achievements amongst the challenges we faced. Our ecological annual report was cause for celebration and reflected the warden team's hard work, with Burton Mere Wetlands supporting the highest density of breeding waders on any RSPB freshwater grassland reserve in the UK.

Our primary targets are avocets, lapwings, and redshanks, but the reserve boasts a long list of other significant breeders such as our first pair of bitterns last year, plus returning great white egrets and marsh harriers. Our visitor team weren't left out from the success either, receiving one of only eight welcome accolades in the North West as part of Visit England's quality assessment scheme. Our warden team have been hard at work recently ensuring we continue to exceed our conservation aims, cutting back the wet grassland and reed to create the perfect breeding ground for the soon to return breeding waders. February is always a marked time in our year with the return of our iconic avocets.



Avocet



Lapwing



Redshank



Sandpiper



Greenshank



Border Hide



Dee Estuary

By March we expect to see some early migratory birds passing through the reserve such as common sandpipers and greenshanks, as well as a peak number of pink-footed geese as they prepare for their long journey to their Arctic breeding grounds.

Two non-feathered arrivals to the reserve have also been the much anticipated return of full-time residential volunteers! They're living onsite and support the team with warden and visitor duties, whilst gaining important conservation experience.

The visitor infrastructure has seen significant updates over the last year. We finally opened the superb Border hide after restrictions had eased in the Spring. Some of you will have seen that we have updated Bridge screen, to accommodate the new second predator exclusion fence that is so important for the breeding waders' success.

A new scrape was excavated near Border hide to create a more essential habitat for our ducks and waders whilst simultaneously improving the views for visitors.

Keep an eye on our social media and website for news on when our events will be happening – events.rspb.org.uk/deeestuary.

The Dee Estuary team hope you can join us on some of our events this year, if only to come for a walk to see how amazing the reserve is looking and appreciate the changing seasons.

For regular updates, sightings information and news about the reserve, check our website blog at rspb.org.uk/burtonmerewetlands follow us on *Facebook* and *Twitter* or call us on 0151 353 2720

The RSPB's events are now listed in one place, here: <https://events.rspb.org.uk/>

Pictures courtesy of RSPB

The Village Houses of Burton & Puddington

This is the third in a short series, 'Village Houses of Burton & Puddington', in which we explore the fascinating history of some of the buildings in our villages.

If you are interested in participating, please contact Mark Watts at markwattsburton@icloud.com

Puddington Hall

For such a small village Puddington boasts an impressive three Halls, all with their own very interesting stories to tell.

In terms of a timeline, Puddington Hall built in 1872-4, is the third in line in Puddington and hence the newest. It was originally designed and used as a 'shooting box' for entertaining the county's gentry during shooting or hunting parties - very popular pastimes of the family residing in Puddington Old Hall and neighbouring country homes. Subsequently, it was upgraded to Stanley Lodge as a type of overflow accommodation for those guests not able to stay at the main house, Puddington Old Hall which, at that time also incorporated The Priest's House.



Finally it underwent a major upgrade in 1904 to become Puddington Hall, making it the building as we now know it. The upgrade improvements included, for the sake of privacy, redirecting Puddington Lane that originally came past the front of the house to its present route, a straight section passing the current bus shelter. In addition, in the early 1900s the entire west wing was demolished - we can only speculate why - running costs, the Depression

The next definite record is that on 27 October 1932, it was sold by auction at the Grosvenor Hotel, Chester to include 112 acres, 2 lodges, 5 cottages, 1 pig farm, 1 motor house, stables and 7 servant bedrooms.

Later in this decade the celebrated architect H.J. Rowse refurbished the Hall for the daughter of Arthur Earle (as of Puddington Old Hall), Olive, on her marriage to Major Walter Higgin, a Liverpool cotton broker. The Hall was run along 'traditional' lines - a past resident of the village recalled how every Spring local children would gather at the Hall armed with pieces of glass to scrape off the wax on the solid oak floor for rewaxing.

Bell buttons to call staff from the servants' quarters and working area of the hall in the west wing are still in place in most rooms. The front door would be answered by a maid smartly dressed in brown uniform.

On the death of Olive Higgin, the Estate was broken up and sold which included most of the houses in the village. The new owners of Puddington Hall, the Sheldons, were eventually responsible for dividing the house into what is now Puddington Hall and West Hall.

Puddington Hall was Grade II listed in 1993. It still retains many of its original Victorian and Edwardian features: solid oak flooring and wood panelling, impressive open fireplace in the entrance hall and sweeping open stairway.



Sadly, and here is an example of how listing protects an historic building, the original main fireplace in the 'drawing room' was ripped out by a past resident and presumably taken with them or sold.

However, the beautiful ornate frieze ceiling in the drawing room still exists as do the sandstone mullion windows.



A casualty of the division of the hall was the original morning room, which is now the kitchen – the useful larders and storage rooms now being part of West Hall, as is the cavernous cellar accessed down stone steps and where you will find (now bricked up) an underground tunnel leading to the laundry (now West Hall Cottage).

A reminder of past days, as I look out of the kitchen window onto the south facing garden, is the 'haha' built to separate the lawn from the adjacent field whilst maintaining the fine view across to the field aptly named 'Majors Park' – apparently Major Higgin regularly held gymkhanas in this field for the local horsey set – I can just imagine it.

Gill Kaye

Editor's Note.

The piece refers to three halls, Puddington Hall, West Hall and Puddington Old Hall.

The 1859 village map shows that there was in fact a further Puddington Hall on what is now Orchard Lane. 'Puddington New Hall' as it was, caught fire in 1867 and was burnt to the ground despite the heroic efforts of the Chester Horse-Drawn Volunteer Fire Brigade.

*Burton & Puddington
Gladstone Village Hall*



***Burton & Puddington Village
Residents***

***What would you
like to see on at
your Village Hall?***

- * New classes?
- * Different events?
- * A community cafe?
- * An open bar night?

**POP UP
EVENTS**

With ideas, interest and help from you,
between us we can make it happen.

Please send us your ideas!

Email: info@gladstonevillagehall.org

Call: 0151 665 0875

Hosted by Simple Folk, its...

*Folk,
Blues &
Beyond*



Play, listen and prop up the bar.

Every last Friday of the month at
the Burton & Puddington Sports
Pavilion, Burton

7:00pm 'til late

& Free Entry

www.gladstonevillagehall.org



LIBRARY INFORMATION

You can now visit the library to borrow books and for pre-booked computer access. Our order collect service is still available. To ensure a safe and comfortable environment for everyone we are recommending the wearing of face covering and we are still maintaining social distancing and hand hygiene.

Neston Library

Parkgate Road, Neston, CH64 6QE

Monday, Thursday, and Friday: 10am - 1pm, 2pm - 5pm

Tuesday: 2pm - 6pm

Wednesday -Saturday: 10am - 1pm

Email: libraries@cheshirewestandchester.gov.uk

Telephone: 0151 337 4670

[Disabled access guide for Neston Library](#)

[Autism friendly guide to joining and using Neston Library](#)

Climate Champions

Is your child concerned about climate change? Literary Arts organisation Read Now Write Now has made a special pre-recorded course on how to write powerful and persuasive stories on the theme of climate change thanks to funding by Arts Council England. To access this free course simply go onto the following link and enrol: <https://read-now-write-now.teachable.com/p/climate-champions>.

New to libraries! Litter Picking Kits

We now have litter picking kits available to borrow from our libraries, so it's never been easier to help clean up your local area! You can borrow kits (kindly provided by Your Streets) from all larger libraries. Just ask a member of staff in your local library and they'll explain how it all works.

Community Collect

You can still pick up free Covid-19 home testing kits, for those without symptoms, from Ellesmere Port, Frodsham, Neston and Northwich libraries and also via the mobile library.



St Nicholas' Church & Gladstone Village Hall



To Celebrate HM the Queen's Platinum Jubilee in Burton, we'd Like to organise a Vintage Street Party

We need your ideas and your help!

What would make this a truly memorable community event - and is there anything you can offer?

Contact info@gladstonevillagehall.org

The Puddington Society



The Puddington Society plans to hold a village event over the Platinum Jubilee weekend of 3 to 6 June which local residents, along with friends and family, will be able to attend. Plans are currently being prepared for an event on and around the Village Green which will be coordinated with other events and celebrations taking place locally and nationally. Puddington Village has celebrated all similar events in the past including the Queen's Diamond and Golden jubilees.

HOW TO ORGANISE A STREET PARTY



Bringing neighbours together is what Neighbourhood Watch does best. One way to connect, celebrate and share with your community is by holding a street party!

In 2022 we will
celebrate
40 years of
neighbourliness,
connection,
and our large
volunteer
network.

GETTING STARTED 3-4 MONTHS IN ADVANCE

- Talk with your neighbours about celebrating our 40th anniversary in June 2022
- Invite your neighbours in writing by popping a 'Save the Date' through their doors
- Apply to your council for a road closure permit

PLANNING

1- 2 MONTHS IN ADVANCE

- Make sure that everyone is involved in the decision making
- Plan activities for all ages, not just the kids, such as a street quiz
- Arrange for neighbours to bring food, games, chairs, tables
- If you are playing music, make sure that it isn't too loud and caters for all tastes
- Arrange for road signage
- Arrange for bunting to decorate the street



HAVE A FANTASTIC TIME ENJOYING YOUR NEIGHBOURS COMPANY! ”

A WEEK BEFORE THE EVENT

- Send out a reminder to your neighbours about the event
- Arrange that the neighbours move their cars the night before
- Display a legal order for road closure if you are required to



ON THE DAY

- 1 Set up road closure barriers and decorate
- 2 Set up the tables, chairs, music, food and drinks
- 3 Clear up and open the road after the party

AFTERWARDS

Share pictures of the event with other neighbours, with your local Association and with **Neighbourhood Watch Network** by emailing enquiries@ourwatch.org.uk or tag us on social media.

NEIGHBOURHOOD WATCH NETWORK covers you for **Public Liability Insurance** so long as you are organising the event in the name of your NEIGHBOURHOOD WATCH SCHEME

REMEMBER THAT TO BE CLASSED AS A STREET PARTY, THE FOLLOWING MUST BE IN PLACE:

- Non-externally publicised event between 1-2 streets (neighbours only)
- Road closure is a residential street
- No alcohol is sold
- Self-organised



FOR MORE IDEAS ON HOW TO PLAN A SUCCESSFUL STREET PARTY, VISIT WWW.STREETPARTY.ORG.UK



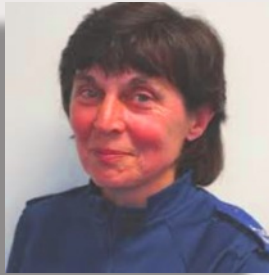
Follow us... ourwatch.org.uk



CHESHIRE POLICE

PCSO

LINDA CONWAY



Our local police officers play an important role in safeguarding our village communities.

Linda Conway is our local PCSO and if you have any concerns you can contact Linda by emailing linda.conway@cheshire.pnn.police.uk or by calling the Police Mobile Number 07824 609048.

You can also reach Linda at:

www.cheshire.police.uk/little-neston-and-burton



Little Neston and Burton Police



LilNestonBurPol



SWORD DANCING WITH MERSEY MORRIS MEN



Mersey Morris Men is a traditional English Morris dance team based in Thornton Hough on the Wirral.

On one Wednesday every month, starting at 8:15 pm, we practise sword dancing in the Gladstone Village Hall.

We dance both longsword and rapper:



Longsword

Mainly the dances from Flamborough in Yorkshire using wooden swords and Papa Stour from the Shetlands with metal swords with a handle at each end.

Rapper

Uses flexible steel swords. This tradition is fast and furious and comes from the North East.

Blood stains on the shirts after a couple of dances are optional!

Why Not Join Us?

If you enjoy a pint or two and want a regular chance to work up a thirst, why not join us? Call Alan on 0151 342 3615 or Andy on 0151 347 1685. No experience is necessary and we even provide the swords!

(Cotswold Morris is every Monday at 8pm in Thornton Hough Village Hall.)

Website: www.merseymorrismen.com

Facebook:- Mersey Morris Men

Bagman: Andy Siddons 0151 347 1685

E-mail:- bagman@merseymorrismen.com



Cheshire West & Chester Mobile Library

THE MOBILE LIBRARY IS BACK ON
THE ROAD!

Cheshire West Mobile Library will be in
the Car Park at Burton & Puddington's
Gladstone Village Hall from
10.35am to 11.10am
on the following dates:

Friday 4 February

Friday 25 February

Friday 18 March



WANTED - USED INKJET CARTRIDGES

- 300 million cartridges sold in Europe per year
- Only 15% of cartridges sold are remanufactured
- 45 million cartridges end up in UK landfill
- Cartridges can take up to 1000 years to decompose
- The life span of ink cartridges can be optimised by reusing & recycling them
- Recycling plastic takes 88% less energy than making plastic from raw materials

TOP TIPS
Recycle Your
Printer
Cartridges



To raise money for the Burton and Puddington Gladstone Village Hall, Guy Tilby is collecting large empty inkjet cartridges for recycling e.g. HP302 or similar.

For each cartridge donated the GVH will receive £1.

Contact Guy at tilbyjohn549@gmail.com or call 0151 336 2339.

Registered Osteopath

Balance Health and Wellness

Back and Neck Pain
Hips and Knees
Headaches and Migraines
Sciatica
Sports Injuries



Robert Day BSc(hons) Ost DO

Homewood

Dunstan Lane, Burton CH64 8TG
[www.Registered - Osteopath.com](http://www.Registered-Osteopath.com)

07879 22 55 62

J.F. O'REGAN

CHARACTER ROOFING SPECIALIST

t. 07784 007 767

w. www.jforeganroofing.co.uk

e. jerrysgarnfishing@hotmail.com

Roof installation, refurbishment and repair - character and period building roofing specialist.

- | | | |
|---------------------|----------------------|----------------|
| ■ Listed Buildings | ■ Schools | ■ Tonne |
| ■ Period Properties | ■ Churches | ■ Welsh Slates |
| ■ National Trust | ■ Decorative Slating | ■ Lead Work |
| ■ English Heritage | ■ Westmorland Green | ■ Roof Tiles |

Whatever your specific requirements, for any form of slating and tiling, or for more specialised character roofing and lead work you can be assured that J.F. O'Regan can be relied upon.
Call Jerry on **07784 007767** for expert advice today!



WELSH | TONNE | RANDOM | SLATE SPECIALISTS

COMPLEMENTARY HEALTH THERAPIST

HEALTH ~ BALANCE ~ WELLNESS



Treatments offered include:

- Lymphatic Drainage
- Remedial Massage
- Cranial Therapy
- Indian Head Massage
- Talking/Listening Therapy
- Natural Face Lift
- Aromatherapy
- Reflexology
- Hopi Ear Candling

Help & Advice on Lifestyle, Nutrition & Wellbeing

IN TRAINED & CARING HANDS
WITH OVER 30 YEARS EXPERIENCE

DUNSTAN LANE, BURTON
OSTEOPATHY & NATURAL HEALTH CLINIC, WEST KIRBY
EMAIL:HELENREID13@HOTMAIL.CO.UK

07712 590 269



VICTORIA'S SANDWICH

Local Artisan Baker

Based in Willaston Village

Find us opposite the Willaston Village Green. Look out for our large black and gold sign on the wall of the bakery!

Thursdays 10am – 3.00pm
Saturdays 9.30am – 1.30pm
Sundays 9.30am – 1.30pm

- Freshly Baked Bread Daily
- Artisan Sausage Rolls, Pies & Quiches
- Handmade Doughnuts
- Delicious Traybakes
- French breakfast pastries
- Bespoke Celebration Cakes
- Free Range Raby Eggs

Why not give us a call 07437823890 Email victorias.sandwich97@gmail.com
To see our Menus follow us on Facebook, Instagram [victorias_sandwich](https://www.instagram.com/victorias_sandwich)





Our professional staff have a wealth of experience arranging funerals for bereaved families, serving Wirral and Merseyside.

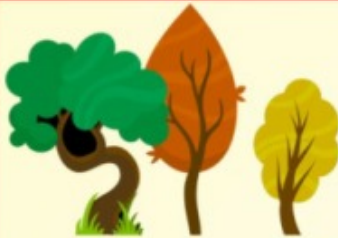
At Charles Stephens our aim is to ensure that you have the minimum of worry and inconvenience at a time of bereavement. We are keen to offer advice and support wherever necessary to help with your funeral arrangements.

Our six funeral homes, situated across Wirral, are specifically designed to cater for all your needs with comfort, dignity and respect. Each and every member of our team is trained to the highest level and we support the attainment of relevant professional qualifications at all levels.

*An Independent Family Business
Established 1896
Fully Qualified Staff
24 Hours, 7 Days a Week
Pre-paid Funeral Plans*

Clifton House, 215, Bebington Road,
Birkenhead, Merseyside, CH42 4QA
Tel: 0151 645 4396

✉ reception@charles-stephens.com



JOEL BLAKEMAN
TREE SURGERY
HEDGE CARE & LOGS

BURTON-IN-WIRRAL

Paddock - Farm - Woodland - Garden
FULLY INSURED & PROFESSIONALLY QUALIFIED

TREE FELLING - REDUCING - HEDGE CUTTING
CHIPPING - STRIMMING - CLEARING

SEASONED LOGS FOR SALE

HARDWOOD, SOFTWOOD & MIXED BAGS DELIVERED TO YOUR DOOR & STACKED
BUILDERS BAGS FROM £65 - SMALL NETS £5 (MINIMUM 6 NETS)

07880 553 775 or 0151 336 7435

maresfieldfarm@btinternet.com

The Celtic Arms

NORTHOP COUNTRY PARK

BOOK NOW
01352 840423



MID WEEK TREAT

2 courses £13.95
3 courses £16.95
Available Monday to
Friday 12 - 9.00pm
Saturdays 12 - 4.00pm
Available from the 2nd of January



SUNDAY LUNCH

SET MENU
2 courses £16.95
3 courses £20.95
We also have a
great children's menu



www.thecelticarms.co.uk | The Celtic Arms, Northop Country Park, Northop, CH7 6WA

WIRRAL FUELS



DOMESTIC, COMMERCIAL & FARM FUELS

01244 851200

www.wirralfuels.co.uk

orders@wirralfuels.co.uk

HEATING OIL - BEST SERVICE - COMPETITIVE PRICES

*Circulation of the Magazine includes people living in
Burton - Puddington - Two Mills - Chester High Road
Ness - Little Neston - Neston - Willaston*

The Parish Magazine & Community News reaches over 350
people in and around the villages of Burton and Puddington
Six Editions a Year - 40 Pages of Church & Community News &
Events & Local Services

To discuss opportunities to advertise here
please contact Sue Birch

sue@suebirch.com

0151 271 4278



*Open 7 Days a Week
Breakfasts - Toasted Ciabattas & Toasties - Hot Drinks -
Homemade Soup
Sandwiches - Cakes - Ice Cream
Chapel House Lodge, Chapel House Lane, Puddington
www.giftcafe.co.uk*



Wanted

Books, travel journals, manuscripts, ephemera and photographs from 1500 to the 1960s (and occasionally beyond!)

We purchase collections, libraries and single items.
We can also provide valuations for probate or insurance purposes.

Jonathan Frost Rare Books Ltd
jfrbooksLtd@gmail.com
0151 7331501 or 07766 711103



We clean your oven so you don't have to.

Call today to have your oven, hob, extractor or Aga professionally cleaned

Contact Phil Cooper

Tel. 0151 7212030
Mob. 07812 252533
Email philcooper@ovenwizards.com
www.ovenwizards.com

WIRRAL & CHESTER CHIMNEY CLEANING Call Mr Walker

Bird Guards

Chimney Cows Fitted

Same Day Cleaning Service Available

Cleanliness Guaranteed
Brush & Vacuum



2 Stonebank Drive
Little Neston
CH64 5DP

Tel: 0151 336 7274

Supporting the Local Community

Dovecote

Nurseries

Station Road

Burton

A Personal Touch &
Great Value

0151 336 5748

www.dovecotenurseries.com

Community & Society Information

THE PUDDINGTON SOCIETY

For information please contact Hazel Huxley on 0151 336 2288

THE BURTON SOCIETY

Thursday, 3 February, 8:00pm Gladstone Village Hall

'Chile: from Tropics to Icebergs'.

Nigel Griffiths describes with photos a journey through this wonderfully improbable country

Thursday, 3 March, 8:00pm Gladstone Village Hall

'Stained Glass'

A talk by Kate Bayes, discussing design and taking us through the process of creating a stained glass panel/window

BURTON & NESTON HISTORY SOCIETY

Thursday 10 February 8:00pm Gladstone Village Hall

'Mersey Ferries' Speaker: Ron Martin

Thursday 10 March 8:00pm Gladstone Village Hall

'We don't want any...Master's not in' - *What really happened on Census night*, Speaker: Claire Moores

For more information please contact Robert Thrift on 0151 335 1771

BURTON WALKING GROUP

For information please contact Gilly Mansfield 0151 336 4297

BURTON BRIDGE CLUB

For information please contact Hazel Huxley 0151 336 2288.

BURTON RESIDENTS' ASSOCIATION

Promoting & protecting the interest of Burton Village. Membership is open to all residents.
burtonresidentsassociation.co.uk

FRIENDS OF HAMPSTONS WELL

Friends of Hampstons Well brings together a community of people who care for and maintain this ancient site

For more information, contact the Secretary on 0151 336 6220 or email friendsofhampstonswell@outlook.com

FRIENDS OF BURTON MANOR GARDENS

For information please contact 0151 336 6154 or email burtonmanorgardens@gmail.com

Magazine Administrator - sue@suebirch.com

*The Parish Magazine is published by the PCC of
St Nicholas' Church, Burton-in-Wirral.*

*Publication is made possible through the contributions and
donations of church members, Friends of St Nicholas' Church,
residents, advertisers and other members of the public.*

*The PCC is not responsible for the content or claims of
advertisers nor does it warrant or endorse any such content.
Consequently no warranties or endorsements should be inferred.*

*The PCC and editorial team retain the right to edit items
submitted for publication. The editorial team's decision is final.*

*Copies of this magazine can be found at
www.burtonchurch.org.uk*

*This magazine is published bi-monthly, six times a year.
It is distributed to residents in the villages of Burton and Puddington and to others.*

In addition the magazine is available on the St Nicholas' Church website

To discuss opportunities to advertise here contact



0151 271 4278 or



07597 051 048



burtonchurchcomms@btinternet.com

*All proceeds in aid of St Nicholas' Church, Burton-in-Wirral
Registered Charity No. 1184831*

